

Winter 2008/9

Edition 35

Lakes & Ale

Free



**PUB OF THE SEASON WINTER 08/09
STATION INN, OXENHOLME**



**Newsletter of the
Westmorland Branch of
The Campaign for Real Ale**

www.camrawestmorland.org



Hawkshead pdf

Editorial

Welcome to the Winter 08/9 edition of L&A. Already 2009 is two months old and we are all looking forward to Spring and, after the cold snap, some warmer weather. With Spring and Summer comes the many beer festivals that we are blessed with in Cumbria and these, & all others, are noted in the events section, including the well established Cumbria Challenge at Burgundy's in Kendal and a new festival planned for the Westmorland Shopping Centre at Easter.

We have several new ventures which Westmorland Branch members are actively pursuing, including a Langdale Ale Trail leaflet based on using the bus up Langdale; a Langdales week long beer festival plus, we hope, a reissue of both the Real Ale Trail by Train leaflet and the 'Let the Bus be your Taxi for a Pint!' advert in the Stagecoach timetable.

In this edition we include three new series which, depending on space available, will be continued fairly regularly through coming issues of L&A. First we have the 'On the Fringes.....' a brief look at some of the real ale pubs that are located on the very edges of the old Westmorland county and which, although serving excellent local real ales, do not often get a mention. Secondly, with the Branch now home to five independent breweries, we are taking a look in turn at each starting with the Watermill Brewing co at Ings. This will be followed hopefully by a Dent Brewery article as the Branch has an eagerly anticipated visit there in march. We can then look in at Tirril and Hawkshead and now our very newest, the Kirkby Lonsdale Brewery which had only just opened as we went to press. So more news and views on them in the next issue. Congratulations to all concerned at the Orange Tree in Kirkby Lonsdale, the new Brewery tap. We also hope, eventually, to bring you the concluding chapters of Brendan Jameson's old pubs of Kendal article.

Finally, we have started an occasional series of 'Down Your Way.....' looking a two, or maybe three, pubs in a definitive local area of old Westmorland and Dentdale. We hope you enjoy reading this edition over a pint or two & continue to both enjoy and support Real Ale in all its forms. Remember though drink wisely. Cheers! Ed

Annual Subscription

To have a copy of Lakes & Ale sent to you quarterly by post, please send your contact details to:

Alan Risdon
4, St. Anne's Court
Ambleside
Cumbria
LA22 9ED

Together with £3 to cover the cost of postage for four issues.
Cheque payable A Risdon

Advertising Rates

1/4 page £25 per edition
1/2 page £40 per edition
£135 for 4 paid up front
Full Page £75 per edition

ADVERTISING EDITOR CONTACT

Alan Risdon
Tel; 015394 33912
www.camrawestmorland.org

COMPLAINT/COMMENT?

The views expressed in this publication are not necessarily those of the Editors, CAMRA Ltd., Westmorland Branch or any other branch of CAMRA, but of the individual contributor. No part of this publication may be reproduced without prior permission.

Cumbria Trading Standards Office: County Hall, Kendal. Tel: 01539 773577.

Westmorland Branch of CAMRA : Editorial (01539) 732599 ; Advertising: (015394) 33912.

“From the Chair”

2009 is going to be an interesting year for our economy and personal finances are under pressure. With this financial uncertainty generating fear and frustration amongst us, looking for the ‘positives’ may be a good way of dealing with the difficulties.

Our cherished beer is certainly a bright shining light in the economic doom and gloom; where some of our products and services are in decline there is clear evidence from the trade that real ale sales are a growth area. A fine example of this is Hawkshead Brewery stating a 30 per cent increase in sales compared to the same months last year.

In Westmorland we are proud to see a very new brewery developed at Kirkby Lonsdale .

(www.kirkbylonsdalebrewery.com).

There are at least two new beer festivals being organised in our area, one involving many of the pubs in the Langdale Valley 18th – 23rd May, the other at the Midland Hotel Appleby in Westmorland 17th-21st June.

The local tourism industry is predicting another year of increasing visitors due to a weak pound against other currencies. With our 25+ breweries in the County producing in excess of 160 regular and seasonal beers, Cumbria is becoming the destination for good beer and food as well as its scenic beauty and peace and tranquillity.

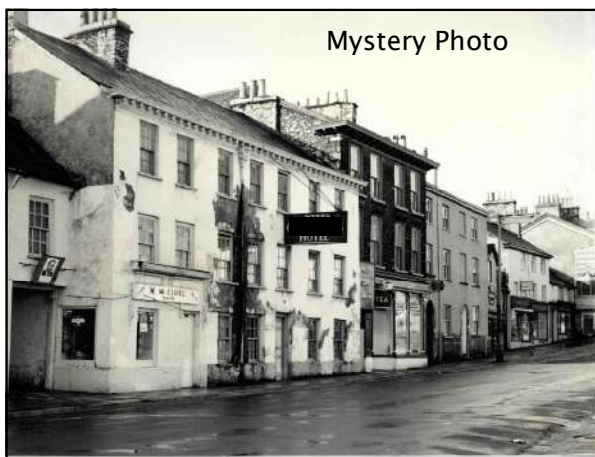
Another positive is that many of the large pub companies are

beginning to reduce the restriction of their leases and tie-ins, allowing landlords a greater choice of real ale. Some are even selling the pubs to their tenants, Alan and Elaine Jackson have purchased the Oddfellow Arms, Kendal on this basis and they are now keen to begin selling real ale.

The Westmorland Gazette is promoting ‘Love Local’ and Westmorland CAMRA are about to promote LocAle.. Both these initiatives are designed to support local businesses and there are major spin-offs for the environment, as both will reduce transport distances of goods and services.

So using the old adage of ‘beer is the solution to and creation of all life’s problems’ please avoid the urge of drowning your sorrows. Instead raise a glass of real ale and celebrate the success and increasing prosperity of our much-loved beer.

Chris Holland



Where am I? *Answer: See Page 40.*

the mardale inn @ st. patrick's well

- £5 two course Farmer's Meal on weekday lunchtimes (please ring for a table)
- Extensive bottled beer list (40 beers)
 - Fresh local food served all day
 - Early 18th century inn
 - Real fires
 - Fine accommodation
- Dogs welcome (but please keep children on a tight leash at all times!)
- Fantastic walking from Haweswater (only 2 miles)
 - No mobile phone signal or TV
 - Good Pub Guide 2009 listed
- Transport to/from the pub can be arranged

Bampton, Cumbria, CA10 2RQ



Cumbrian Ales Summer 2008

Coniston Bluebird 3.6%
 Scafell Blonde 4.3%
 Keswick Thirst Ascent 4.0%
 plus Northern Guest Ale:
 Timothy Taylor's Landlord 4.2%

tel: 01931 713244

website: www.mardaleinn.co.uk

A very free house ...within reason!

The Unicorn Inn

North Road, Ambleside.



A warm welcome awaits you at Ambleside's oldest Coaching Inn situated in the heart of the town. We offer first class en-suite accommodation together with a choice of superb home-cooked bar meals. We serve four Robinsons /Hartley's cask ales for your enjoyment in our traditional bar with oak beams and open fireplace. Live music weekly, musicians and singers welcome.

Bookings taken on 015394 33216

MIDLAND HOTEL

APPLEBY - IN - WESTMORLAND



**Open
From
10 am
to
11 pm
Daily**

Midland Hotel
25, Clifford Street
Appleby - in - Westmorland
Cumbria
CA16 6TS
(017683)51524

Paul and Leigh welcome you to the Midland Hotel a nineteenth century building, first licensed in 1836, & adjacent to Appleby Railway Station on the famous Settle to Carlisle line offering:-

- A choice of four Real Ales all changing weekly Thwaites, Heskett Newmarket, Keswick and Dent Breweries
- Locally produced Home Cooked Food all day
- Big screen showing Sky sports and video jukebox
- Private parking
- Quality Wines and spirits
- En-Suite Accommodation
- Pool/Games room

Email: mateusrose1986@hotmail.co.uk

WATEREDGE INN *on the lake at Ambleside*

LOG FIRE~LAKESIDE BEER GARDEN~OPEN 10AM~11PM~015394 32332

MP's opposition to beer tax

CAMRA can happily report that more than 100 MPs have signed up to a campaign calling on the government to end plans to increase beer tax in this year's budget.

A total of 113 members from all three main political parties have signed an Early Day Motion (EDM 10) calling to scrap the beer tax escalator, which has seen an astronomical 17% rise in the last year.

At a time when almost 6 pubs are closing per day, and thousands of people are losing their jobs accordingly, a further duty rise of 2% over inflation for the next four years would hugely damage the Great British pub.

Mike Benner, CAMRA Chief Executive, said: "Today, a third of a pint of beer goes to the taxman - and now the Government wants to increase it even further."

"At a time when pubs are suffering from the wider recession, the Chancellor's tax plans will be a hammer blow to consumers and industry alike."

The news is a further boost to the work of the Axe the Beer Tax - Save the Pub campaign, having attracted 20,000 supporters since its launch in November last year. You can also find out more about the campaign on facebook or the Axe the Beer Tax campaign website.



CAMRA BOOKSHOP

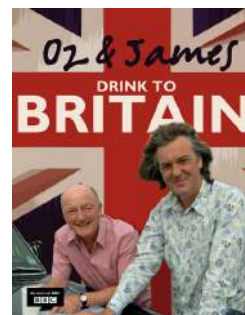
Two new books available from CAMRA HQ:

£12.99



This new edition is re-written, enhanced and updated with new recipes for contemporary and award-winning beers, as well as recipes for old favourites no longer brewed commercially

£17.99



Oz Clark, a wine connoisseur, and James May, a beer-drinking, fast car fanatic, set off on a summer road trip on a quest to find the drink that defines modern Britain.

Their first mission: to find out what goes into a good British beer and how it is made.

CAMRA WESTMORLAND BRANCH PUB OF THE SEASON—WINTER 2009 STATION INN, OXENHOLME

The Pub of the Season for Winter 2009 has been very deservedly awarded to the

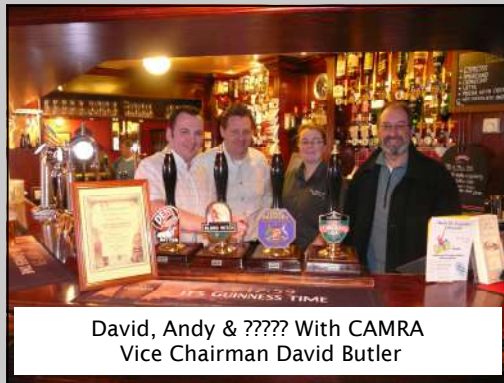
Station Inn

at Oxenholme. The pub, which is owned by Enterprise, was taken over by landlords Andy & Dave in August 2006. Andy came from a career in catering instruction at Lancaster & Morecambe College and David had a career as well in the catering & hotel sector.

They soon set about achieving a transformation of the Pub and quickly added a forth real ale pump. The ales are mostly local to the North West. Regular brews are Jennings Cumberland and the wonderful Moorhouses Blonde Witch, plus two other changing guests. The pub has two main bar areas with log fires & a fish tank. There is a separate dining room in the side extension to the Pub and naturally enough Andy & David

have established a good reputation for well prepared and good value meals all made from local produce.

The pub has traditional games and outside a Crazy Golf course was set up



David, Andy & ???? With CAMRA
Vice Chairman David Butler

next to the large beer garden and children's equally large adventure playground. In the next field are several Alpacas to amuse children & adults alike. Plans are also well advance for a caravan site in an adjacent field.



Chairman Chris Holland presents David & Andy with
the POTS Award

All told a visit whether for a very pleasant quiet meal; Sunday lunch or to as a family to let the children play happily in the garden will not disappoint. But from CAMRA's point of view the main delight is to sample their well kept real ales in the true CAMRA tradition.

Well done Andy & David, long may you reign.

THE SUN @ CONISTON

(first stop after Coniston Old Man)

5 BREWS AND A VIEW

At the start (or end) of the Walna Scar road, The Sun has been supplying thirsty walkers for about 400 years or more. A genuine freehouse, we keep 5 ales on tap including 2 locals (Bluebird and Hawkshead) and 3 for any guests that take the landlord's fancy (that's ales, not guests). P.S. the landlord prefers premium beers from anywhere in the country so don't be surprised to find gems like Young's Special or Adnams or London Pride, Spitfire or Hobgoblin available.

Coniston, Cumbria, LA21 8HQ

Telephone: 015394 41248

Fax: 015394 41219

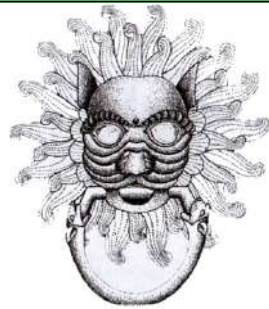
www.thesunconiston.com



TIRRIL BREWERY

(www.tirrillbrewery.co.uk)

Fine Westmorland Ales



Always available at:

The New Inn, Brampton, Appleby-in-Westmorland (017683)
51231 Also at selected outlets within Cumbria and North Lancashire

THE CHANGING FACE OF THE STATION INN AT OXENHOLME.



*Left: a taxi right to
the door!!!! Thos.
Askew is landlord.*

*Right: A well earned
drink for father and
schoolboy son. Now the
landlord is J C Dixon.
Taken Aug 1947.*



*Right: The Station Inn
in 2009. with restaurant
extension to the right.*



MANOR ARMS

**CAMRA
WEST PENNINES
PUB OF THE YEAR
2008**

NO JUKE BOX

NO PLASMA TV

JUST GOOD
CONVERSATION

PUB of the YEAR 2008
CAMRA CUMBRIA



FREE HOUSE SINCE 1768

3 DIAMOND ENSUITE
ACCOMMODATION

HOT SNACKS
SERVED TILL
10pm

Family run traditional pub with 2 real fires, set in a quiet market town on the edge of the Lake District

Regular Beers are: Yates Bitter, Copper Dragon Golden Pippin and another from Cumbria. Also Up to 6 other countrywide Guest Beers

OPEN ALL DAY - EVERY DAY

Manor Arms, The Square, Broughton-in-Furness Tel: 01229 716286



Andy & Jean welcome you to the

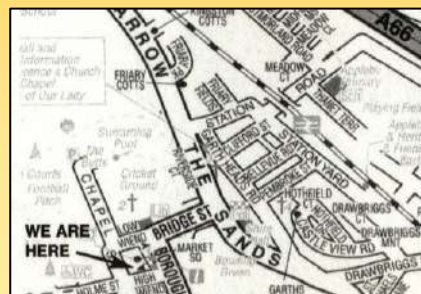
Golden Ball

4 High Wiend
Appleby
Cumbria
CA16 6RD

Tel: (017683)51493

Email: jesveinsson@hotmail.com

- Cosy friendly atmosphere
- Offering Real Ales, Quality Lagers & Spirits
- Homemade country-style bar food, using local fresh produce, available daily
- Pub Quiz, Darts, Dominoes & other pub games
- Sheltered Beer Garden
- Accommodation available
- Ideal location for Eastern Lakes, Eden Valley & North Pennines



CAMRA WESTMORLAND BRANCH HIGHLY COMMENDED ELLERY HOTEL, WINDERMERE



Anyone who hasn't paid a visit to Windermere's Ellery Hotel in recent months would not recognise the place. So say regulars Bill & Alan who can now be found in the new bar most days. The Pub has been run by landlords Adam & Angela since June last year and owners Enterprise Inns have given the place a complete make-over.

The Bar has been completely redesigned and moved to the

opposite of the long, airy room that serves as a Bar area. There is a real log fire and pleasant but contemporary furniture and fittings, There is also a choice of comfy chairs or high stools.



Branch President Alan Risdon presents the POTS Award to Adam & Angela

All this renovation and hard work by Adam & Angela has resulted in an increased popularity and it is now a busy town local and a good watering hole for the many visitors to this popular area of the South Lakes.

(Continued on page 14)



THE OLD DUNGEON GHYLL HOTEL GREAT LANGDALE

**CAMRA Westmorland
PUB OF THE YEAR
2008**

UP TO 8 REAL ALES INCLUDING
YATES BITTER
WESTON'S OLD ROSIE SCRUMPY CIDER
EVERY GOOD BEER GUIDE SINCE 1986
EVERY EDITION OF THE GOOD PUB
GUIDE
FOOD SERVED 12.00 to 2.00 & 6.00
to 9.00 EACH DAY
PLEASE BOOK FOR DINNER IN
THE HOTEL

☎ 015394 37272

WWW.ODG.CO.UK



*17th Century
Traditional Country Pub*

Excellent home-made food with a modern twist,
local beef and lamb supplied by Abbots Reading Farm

- 6 Real Ales
- 40 Seater Restaurant
- Accommodation
- 2 Open Fires
- Good Pub Guide 2007
- Good Beer Guide 2007
- Free House, Children Welcome
- Beer Garden

**Bouth, Ulverston,
Cumbria LA12 8JB**

Telephone 01229 861229
www.bed-and-breakfast-cumbria.co.uk
e-mail: nigelwhitehart@aol.com

(Continued from page 12)

Three hand pumps serve local ales in great condition and accommodation plus good local food and are available.

Like all good 'locals' the pub has a quiz night; full disabled access, and is also dog friendly.

Westmorland Branch are delighted to see one of the old established pubs in Windermere re-established as a force in the real ale world and a one which will provide the many visitors with an excellent impression of Lakeland hostelrys.

Congratulations to Adam & Angela, keep it up we need a Windermere pub in the GBG!

(Continued on page 35)



Regulars Bill & Alan enjoy a pint and a yarn with Bar Staff - Paul & Terri

Below: Frank had his wedding 'do' in the Ellery Hotel in 1950. He is a returned regular now the pub is revitalised and he keeps the fire topped up. Between his half of Guinness But beware, he does have his own chair!!!



Above: A view of one end of the very comfortable bar area with its log fire



Royal Oak Inn

**Brantfell Road
BOWNESS-ON-WINDERMERE**

OPEN FROM 11, 7 DAYS A WEEK

FOUR REAL ALES, INCLUDING CONISTON BLUEBIRD

**Children's licence, dining room
Games area with pool, TV etc.
Excellent home-cooked meals served all day
Warm, welcoming atmosphere + real fire!**



Patio, car park and en-suite accommodation

For full details and bookings

Telephone 015394 43970; e-mail info@royaloak-windermere.co.uk

Website www.royaloakwindermere.co.uk

Steve and Angie look forward to seeing you

tweedies bar

FINE FOOD & DRINK WITH A GREAT AMBIENCE
A WINNING COMBINATION

Set in the idyllic surroundings of Grasmere in the heart of the Lake District, Tweedies Bar offers not only warmth and fine hospitality but a variety of seven hand-picked real ales, fine ciders and world class bottled beers as well as a wonderful selection of fine foods freshly prepared by our critically acclaimed chefs.

Whether rain or shine our staff are at hand to comfort and advise you through your real ale tour with knowledge and experience accumulating in over 30 years of real ale care and keeping. With added extras such as an array of live music, football and a weekly quiz we are sure to provide you with all your leisure time needs.

Traditional and Contemporary Food



CAMRA award winning Pub



Live Music on Sunday Evenings



Relaxing Pool Room



Tweedies Bar

Dale Lodge Hotel, Grasmere, Lake District, Cumbria LA22 9SW
www.dalelodgehotel.co.uk enquiries@dalelodgehotel.co.uk t: 015394 35300

Down Your Way The Bamptons

In 1930 Alfred Wainwright made his first visit to Lakeland, taking in High Street in the Eastern Fells. Below him would have been the valley, later flooded in the late 1930's to create Haweswater. High Street travelers today, (including around 10,000 coast to coast walkers per annum embarking on Wainwright's brainchild) continue east to Bampton, for a well earned stop-over – and awaiting them are two Cumbrian jewels,

**The Mardale Inn at St Patrick's Well (CRAG guide p23) and
The Crown and Mitre Hotel (CRAG guide p24).**

Travelers arriving from east, west or from any other points by foot, bike or car, will find both pubs offering great hospitality, high quality accommodation, locally sourced food and an impressive range of Cumbrian micro brewery ales. Both free houses were bought in the last couple of years by their current owners and have benefited from impressive investment and reflect the individual personality and innovation of their respective owners.

Keith and Jane opened the doors of the Crown and Mitre on Valentine's weekend in 2007. Keith knew the pub from 1976 when he was in staying there, while working on the nearby water pipeline. As a former 'coast to coast' guide –

and a veteran of nearly 40 coast to coast 'crossings', he could see the potential for a quality pub at this traditional resting point, offering great beer,



Keith at the Crown & Mitre

traditional pub atmosphere and quality accommodation.

A real log fire is lit in the bar, which has an elegant, drawing room feel, with leather sofas and old polished wooden tables. Keith's walking heritage is captured in the prints of fells and Lakeland views, while prints of racehorses are evidence of Jane's former life as a racehorse trainer and former point to point jockey.

The Crown & Mitre, Bampton Green



Fans of Black Sheep bitter, will find it featured as the regular ale, in excellent condition. The other two hand pumps are dedicated to

(Continued on page 19)

CONISTON BREWING CO.

EST. 1995

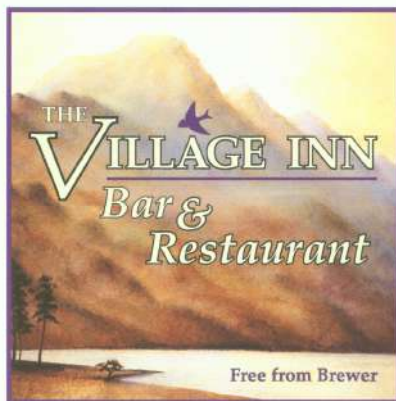
Coppermines Road, Coniston, Cumbria LA21 8HL
Email: info@conistonbrewery.com

Tel: (015394) 41133
Website: www.conistonbrewery.com

Hidden away behind the Black Bull in Coniston is the Coniston Brewing Company.

This outstanding brewery, run by Ian Bradley, is where Bluebird Bitter is made. This 3.6% session beer won Supreme Champion Beer of Britain 1998 at the Great British Beer Festival in London.

Coniston Brewery use only the finest ingredients in their brewing process. The water used by the brewery comes from high up on the fells surrounding Coniston.



***St Martins Hill Lake Road
Bowness on Windermere
Cumbria LA23 3DE***

English Lake District

015394 43731

***email villageinns@hotmail.com
www.villageinnbowness.co.uk***

***Opposite the Church,
Close to the Lake***

Quality Beers - Hand Pulled - Local & National

***Quality Food - Locally Sourced Produce
Served in our Bars & Restaurant***

Patio & Beer Garden - Open All Year

(Continued from page 17)

local Cumbrian microbrewery suppliers. On our visit, Keswick Brewery had two ales on offer, both superb! Keith has noticed that former regulars that were committed cider drinkers are switching loyalty to sup on the local ales.

The Crown and Mitre opens at the normal times for a rural pub. To be sure it's open when you plan to visit, full details can be found in the CRAG guide and by checking the website

www.crownandmitrehotel.co.uk

(or you can be old fashioned like me and call them on 01931 713225).

Local businessman and Eastern Fells resident for 40 years, Sebastian (owner of the Mardale Inn at St Patrick's Well) and Sharon, the Manager of the business opened to the public in May 2007 following extensive renovation. St Patrick's Well appears in my 1979 Good Beer Guide with the description 'isolated and friendly, with delicious home made pies'. Following sensitive

Mardale Inn @ St Patrick's Well



renovation, the new team offers excellent food (great pies, and much more, ask about the £5 Farmers Lunch - a great deal), a friendly and intentionally informal welcome - which is warmly

extended to dogs. Sebastian's dogs often occupy the best seat in the house, nuzzled beneath the crackling log fire (see photo!). All the seats are good, in this simply furnished, one room pub. The interior feel is rustic and contemporary with candlelight and subtle spotlighting creating a cosy atmosphere.

Sebastian believes 'the best way to have a pub is to open it' and visitors will find, as the pub sign states, that the pub is always open (well almost!). Certainly you will find a friendly face to serve drinks and for most of the day food throughout the day and evening - every day. All draught ales are sourced from Cumbrian microbrewers and on repeated visits, the choice is varied and is always kept in tip top condition, and as an alternative or compliment to draught ale, an impressive range of bottled beers from across the world is also available. Male customers will find a visit to the gents intriguing, I can't comment on the alternative décor on offer in the ladies.



Like Keith, Sebastian shared the vision for the potential of good beer, great atmosphere and quality accommodation and food - to serve the needs of locals, passing tourists and visitors and the

(Continued on page 21)



**VOTED
CAMRA Westmorland
PUB OF THE YEAR
2007**

*The FAMOUS
Eagle and Child Inn
- Staveley -*

5 Real ales always

Scrumpy Ciders

Fresh Local Food

Annual Beer
Festival
1st 2nd 3rd May

See our new website

***We Are In the Vibrant village Of Staveley
10 min from Windermere or Kendal - Train or-555***



www.eaglechildinn.co.uk

DRIP TRAY NOTICE BOARD

Oakham's Attila from Cambridgeshire has today been crowned the Supreme Champion Winter Beer of Britain 2009 by a panel of judges at the CAMRA National Winter Ales Festival in Manchester.



The 7.5% ABV barley wine is described by the brewer as having 'fruity notes and an elderflower aroma, with the taste of ripe red berries and citrus fruit and a long bitter fruity finish.' (see p35)

Following news on closures;

New Inn, Hoff & Bay Horse, Winton both up for auction ;

Three Greyhounds at Great Asby up for sale

As is Butcher's Arms, Crosby Ravenscroft. There are several pubs around Kendal for sale .

Cock & Dolphin, Kendal also reported closed



(Continued from page 19)

growing number of coast to coasters.

For visitors, within a reasonable distance, perhaps meeting up as a group, it is worth keeping an eye on the website for news of a soon to be launched transport service, to bring you to and from the pub - see www.mardaleinn.co.uk or phone on 0131 713244. Also look out for expected news of 'fondue' nights.

Sebastian and Keith are both champions of local Cumbrian microbrewers, and share a commitment to support local producers and both acknowledge the attention to service and customer response they receive from their Cumbrian microbrewers. Both are very positive about the future for their businesses in 2009, with a shared view of an expected increase in UK, and over-

seas visitors and both are enthusiastic advocates for the peace and relatively undiscovered charm of the Eastern Fells.

The Eastern Fells offers a range of walking and other outdoor choices, to suit all abilities. Those preferring to visit by car can enjoy the dramatic stark scenery featured in the classic film 'Withnail and I' and the more gentle landscape of the Lowther valley. All Visitors to Bampton, just a short drive off the M6, (or a very long walk from and Robin Hoods Bay!) will find these two great pubs, upholding the fine tradition of English pub keeping, with a Cumbrian welcome endorsed by Cumbrian produce and ales.

SF



WESTMORLAND BREWERIES

1 - Watermill Brewing Company, Ings

A new series of Articles featuring each the stories behind our Branch's four, soon to be five, great independent breweries. Will there be more by the end of the year ?

First it is the turn of the Watermill Brewing Company; next up we hope to have an article on Dent Brewery after our Branch visit in March. Then we have Tirril, Hawkshead and new boys Kirkby Lonsdale to follow.



The Watermill Pub at Ings with Brewery attached on the left

When Alan Coulthwaite and his son Brian moved into the premises which has since grown into the real ale oasis that is the Watermill at Ings, it was their cherished ambition to open not only a Mecca for real ale but also start their own Brewery.

In 2006 this dream was realised but unfortunately can too late for Alan, our much lamented past President, who by then was unwell with Alzheimer's and unaware of the plans being carried out.

Brian had started with the building of

the extension to the Pub next to the current car park.. But there was no mains drainage and North West Water had to be persuaded to install mains drainage. This they agreed to do and all seemed well until they found an escape clause and dropped the scheme. Thus Brian had to install a £60,000 water treatment plant in the car park so that he could pump the considerable waste water from a brewery direct into the next door stream. This involved special dispensation as the stream has SSS status.

Only then could he turn his attention

(Continued on page 26)

BARNGATES BREWERY



A range of traditional ales brewed
in the very heart of the Lake District.

Tel: 015394 36575
info@barngatesbrewerytrade.co.uk
www.barngatesbrewerytrade.co.uk

(Continued from page 24)

to getting hold of some suitable plant. This he did by trawling the internet and tracking down a suitable 5 barrel plant and equipment near to Daytona Beach, Florida in 2005 which was then stored at Taccou, nr Atlanta.

Brian went across to pack the plant into a container which was then shipped to across the Atlantic to Felixstowe. taking 3 weeks, and thence by road to Leeds. There an arctic delivered it to Ings. By this time they had realised that the plant was too big to go through the new brewery doors so more work was needed to widen the doorway. Eventually the first brew was made in 2006.

The brew was named Collie Wobbles, the first in what is now a long line of mostly doggie themed names. Collie Wobbles was 5%ABV and very successful and won many Awards. Beers brewed so far have been:

- Collie Wobbles 3.7%
- A Bit'er Ruff 4.1%
- Wruff Night 5.0%
- Paw Christmas 4.0%
- Hamsters WOF 3.4%
- Dogs Dinner 4.2%
- Paws For Thought 4.5%
- Isle of Dogs 4.5%
- Ruff Justice 4.2%
- A Winters Tail 4.3%
- Blackbeard 3.8%
- Dogth Vader 5.1%



The present brewery extension



Showing evidence of winter journey's this is the Brewery delivery van

Now Brian has decided to plan another extension to the Brewery premises to enable him to have more room for all the ancillary equipment that is needed to operate a 5 barrel plant to a higher



The New Brew Kit

capacity. Most, maybe 95%+, of his beer is sold within the Watermill pub, alongside the other over half dozen real ales on dispense at any one time. Watch this space as they say!



ALEXANDER'S

THE PUB



St Patrick's Day
Tuesday 17th March
Authentic Irish Specials
Cooked by authentic Irish Will

Mother's Day
Sun 22nd March
2 courses £13.95
3 courses £10.95
Booking now
Being taken

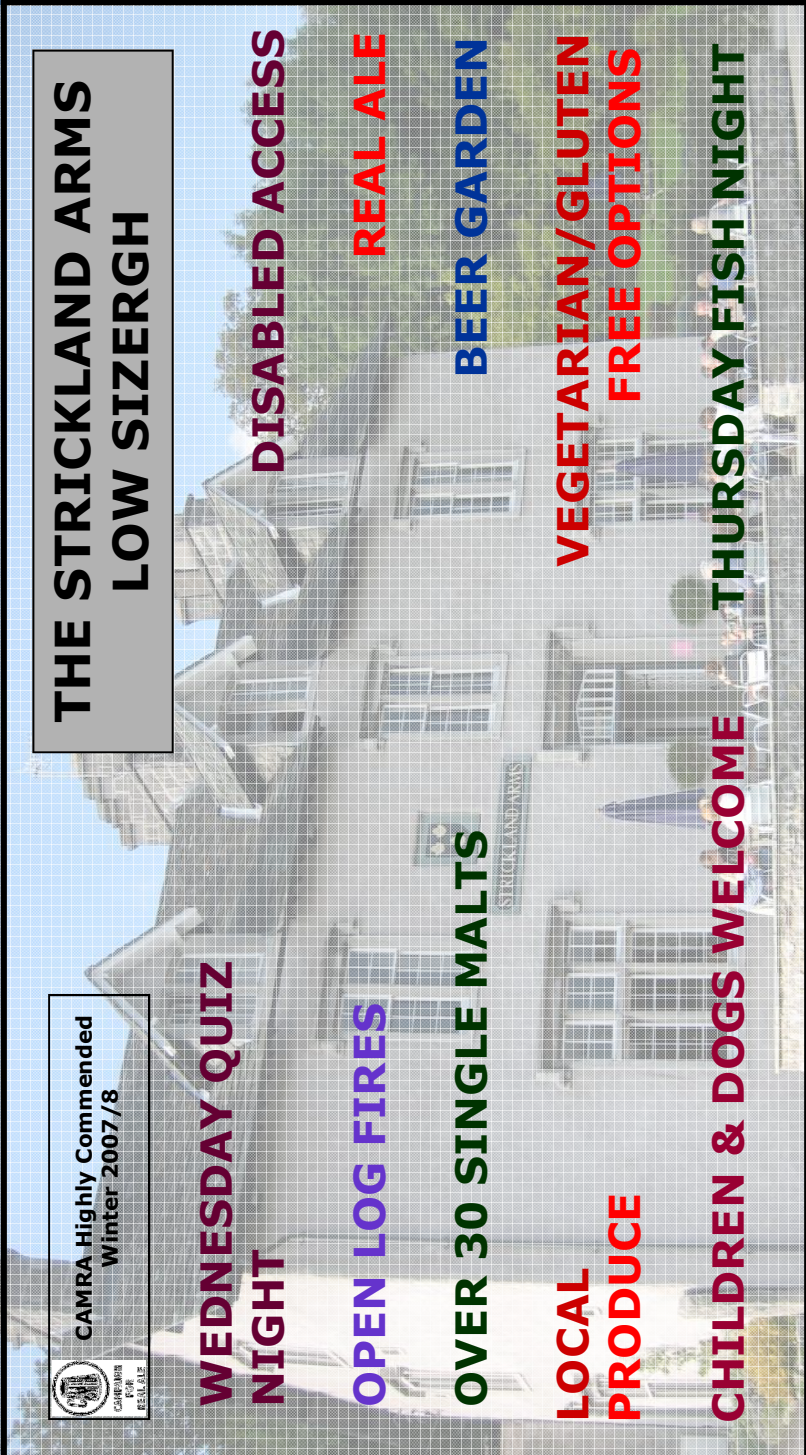
ALEXANDER'S PUB WAS ESTABLISHED IN 1997 AND IS SITUATED IN THE GROUNDS OF THE CASTLE GREEN HOTEL IN KENDAL. BUILT FROM AN OLD BARN WITH A LARGE CONSERVATORY OVERLOOKING KENDAL CASTLE AND THE LAKELAND FELS, THE PUB BOASTS A TRADITIONAL PUB MENU AND A SPECIAL STEAK BOARD WITH FOOD SOURCED LOCALLY.

ALEXANDER'S OFFERS UP TO THREE DIFFERENT TRADITIONAL ALES AT ANY ONE TIME FROM OUR LOCAL BREWERIES - CONISTON, HAWKSHEAD, YATES, TIRRIL & DENT.

LES BROWN, THE PUB MANAGER AND ALL HIS STAFF WELCOME ONE AND ALL TO THEIR FANTASTIC ESTABLISHMENT TO SAMPLE GOOD FOOD AND TRADITIONAL ALES IN A WARM AND FRIENDLY ATMOSPHERE.

OPEN EVERYDAY FROM 12 NOON
FOOD SERVED ALL DAY FROM 12 NOON UNTIL 9.30PM

**ALEXANDER'S THE PUB, THE CASTLE GREEN HOTEL,
CASTLE GREEN LANE, KENDAL CUMBRIA LA9 6RG
TEL 01539 797017**



**CAMRA Highly Commended
Winter 2007/8**

**WEDNESDAY QUIZ
NIGHT**

OPEN LOG FIRES

OVER 30 SINGLE MALTS

**LOCAL
PRODUCE**

CHILDREN & DOGS WELCOME

DISABLED ACCESS

REAL ALE

BEER GARDEN

**VEGETARIAN/GLUTEN
FREE OPTIONS**

THURSDAY FISH NIGHT

**THE STRICKLAND ARMS
LOW SIZERGH**

**WE ARE OPEN ALL DAY DURING SUMMER!
AND SERVING FOOD...**

12 - 2pm & 6 - 9pm MON-FRI

12 - 2.30pm & 6 - 9pm SAT

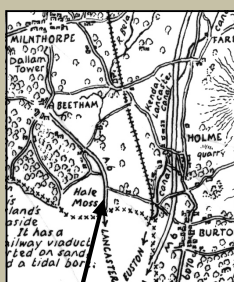
12 - 8.30pm SUNDAY

**THE STRICKLAND ARMS,
LOW SIZERGH,
NR. KENDAL, LA8 8DZ.
Tel: 015395 61010;
E: thestricklandarms@yahoo.co.uk**

ON THE FRINGES

This is the first in a new series of Articles in which we hope to feature some of Westmorland's pubs serving good real ale & that are on the fringes of our old County and don't necessarily get the notice that they deserve. We will try to be as diverse as possible but being on the 'Fringes' may well mean that most will be isolated country pubs or in small rural conurbations. We start with.....

The Kings Arms, Hale



Kings Arms



Situated on the busy A6 a few miles south of the town of Milnthorpe, the Kings Arms sits on its own save for a garage opposite and within shouting distance almost of the border with Lancashire.

The Pub, owned by Mitchells, was taken over in June 2008 by new landlords George & Ann, who quickly established it as a pub with a reputation for well kept ales and good local food.

The pub chooses from the changing range of brews on Mitchells beer list to be served up on the three to four hand pumps by very welcoming bar staff including Jo who, in the absence of George, gave me the lowdown on the pub. There is usually Beacon, Pendle & Black Sheep on display plus a changing guest which when we visited was York's Guzzler. Well worth a visit to try out the ale.

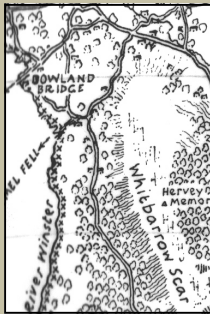
The Pub has a large bar, games room and a separate dining area plus a function room upstairs. In addition to running quiz nights the pub owns a crown bowling green which is open for use by visitors, in the season, on payment of a small fee.



Jo serving up a Black Sheep pint

Travelling north and then west we find an equally well known hostelry, we next come to the small but fairly well known hamlet of Bowland Bridge. This is in an area extremely popular with walkers and right opposite the local post office and shop

Hare & Hounds.



This Jennings pub, now of course part of the Marston's empire, was taken over on the Bank Holiday of August 2008 by Landlords Muriel and her son Jamie. It also is within shouting distance of that old part of the County of Lancaster previously known as Furness or North Lonsdale & in whose area resides the next pub up the hill, the Strawberry Duck. Now of course all part of Cumbria.

They keep three to four hand pumps on real ale & which come from Marstons range of beers, all in excellent condition. Again, well worth a visit.

Jamie is a fully trained chef and the provision of a good range of local food is his domain. The pub has real log fires in the renovated bar area and there are also two separate dining rooms plus a snug.

There is a large beer garden plus a forecourt to the front plus there is also one ensuite B&B and according to Muriel the pub does have its own resident ghost. Reputably a young girl who met an untimely end, she has been 'seen' a couple of times since Muriel and Jamie took over!



Muriel serves up a pint of Cumberland



The Cross Keys Hotel

Superior En-suite accommodation

2 Four Posters, 2 Family Rooms 4 Double Rooms 2 Bedroom Cottage

Open all day, Beer Garden, Home cooked food, Function room

Large car park CAMRA GBG 2007 Robinsons Best Kept Cellar 2008 - 09

www.thecrosskeyshotel.co.uk Milnthorpe 62115

THE RIFLEMAN'S ARMS

The village green pub at the top of the hill



The Rifleman's Arms
4-6 Greenside
Kendal
Cumbria
LA9 4LD

- Opening Hours: 6pm - midnight Mon to Fri; 12 noon - 12 midnight Sat & Sun
- Four real ales on hand pump, always in sparkling form
- Live folk music Thursday nights
- Meeting room available
- Always a warm welcome from landlord John

CAMRA
Pub of the Season
Winter 2007/8

Queens PDF

Finally in this first article we travel north again around Windermere and Ambleside where we then turn west to the Little Langdale Valley. This lies parallel to, but south of, the Great Langdale valley in which reside such pubs as the Old Dungeon Ghyll, Wainwrights, Britannia, etc. But in Little Langdale there is now but one

The Three Shires

Originally called the 'Travellers Rest' but renamed the 'Three Shires' in the 50's, the current owner of some 26 years, Ian Stephenson told me that there were originally two further pubs higher up the valley in days long past.

The valley is well loved by walkers and has its own charm separate to that of its 'Greater' namesake. It is this valley from which all travellers aspiring to go up & over the Wrynose (and maybe the Hardknott) Passes must start their ascent.

The Pub is now aptly named 'Three Shires' for higher up on the Wrynose Pass is the meeting point of the three old Counties of Westmorland, Lancashire and Cumberland. Thus it is also

well qualified to be termed 'on the fringes'. Ian, who runs this wonderful old family owned pub with wife Jane



and his sister Elaine, believes the building wasn't always a pub but nevertheless has been one since the nineteenth century when it undoubtedly served as a coaching inn.

The slate floored main bar has 4 hand pumps serving the real ale. Generally they consist of Black Sheep, Cumberland Ale; plus two changing local guests. Next to the bar area is a cosy snug. Serving the needs of the many walkers means the pub is open 11 to 11 every day except in December/January when afternoon closing is observed. Again good local food can be found in the bar and separate dining rooms and, as one might expect, accommodation is available.

If you want a great real ale right in the heart of the Langdales, whether as a walker or visitor by car, this 'Fringe' pub is well worth a try.

Titus O'Newt



Elaine serving up a Black Sheep beer

O'Neil & Petrie pdf



STRINGERS
100% Renewably Powered Brewery
Ulverston Cumbria

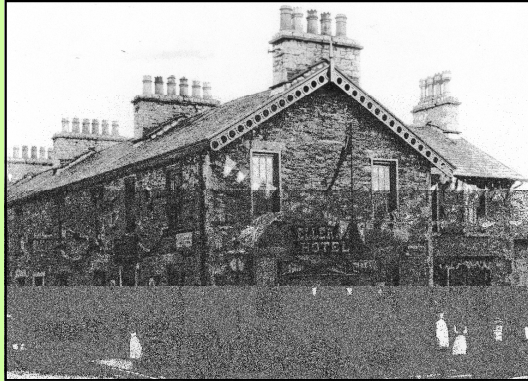
Four circular beer labels are displayed below the main text:

- STRINGERS BEST BITTER** (Blue label, 4.2% ABV)
- STRINGERS GOLDEN ALE** (Yellow label, 3.7% ABV)
- STRINGERS DRY STOUT** (Black label, 4.5% ABV)
- STRINGERS GENUINE STUNNING STRONG ALE** (Red label, 6.5% ABV)

At the bottom left is the **SIBA** logo. At the bottom right, the contact information is provided:

01229 581387
sales@stringersbeer.co.uk

(Continued from page 14)



Above: The ER decorations on the wall suggest this is a Coronation picture for Edward VII (1902)



ELLERY HOTEL THROUGH THE YEARS

Below: This is a picture taken in 1945 for the Dutton's Brewery when they acquired the old Alexanders Brewery pubs



Left: The Ellery Hotel in its renovated state in 2009

Winter beer styles, as taken from CAMRA's 'Dictionary of Beer':

Porter - A dark, slightly sweetish but hoppy ale made with roasted barley; the successor of 'entire' and predecessor of stout. Porter originated in London around 1730, and by the end of the 18th century was probably the most popular beer in England.

Stout - One of the classic types of ale, a successor in fashion to 'porter'. Usually a very dark, heavy, well-hopped bitter ale, with a dry palate, thick creamy, and a good grainy taste.

Old Ale - Now virtually synonymous with 'winter ale'. Most 'old ales' are produced and sold for a limited time in the year, usually between November and the end of February. Usually a rich, dark, high-gravity draught ale of considerable body.

Barley Wine - A strong, rich and sweetish ale, usually over 1060 OG, dark in colour, with high condition and a high hop rate.

THE 13th CUMBRIAN CHALLENGE 2009
MICRO-BEER FESTIVAL

at
Burgundy's, Lowther St Kendal

Thurs April 2nd 6pm-11pm
Friday April 3rd 12-11pm
Saturday April 4th 12-11pm

This 13th pint-size "Taste of Cumbria", offers a sample of beers from the county's small independent brewers side by side under one roof at Burgundy's in Kendal.

Local beers - made with local waters
by local people - for local people

Covering the county the secret recipes of our small independent brewers will be served alongside each other to discover the county's favourite pint.

The ***Special Westmorland Sausage*** created especially for this event eleven years ago by local Master Butchers, Higginson's of Grange-over-Sands, has gained legendary status and will again be sizzled to help you soak up all those local ales.



Come along and sample
a truly unique
Pint & Sausage
all from
our own county
Give them a Go!



For information or
Bookings contact:

Ed or Lee

Tel: (015394) 36372

www.kingsarmshawkshead.co.uk

HAWKSHEAD, AMBLESIDE, CUMBRIA

This traditional Lakeland Inn with oak beams and open fire in the bar, offers a warm welcome to all. Light snacks and bar meals are served between 12-2.30 and 6-9.30 daily and are complimented by a choice of 4 cask ales. Situated in the delightful village of Hawkshead, the Kings Arms makes an ideal base to tour the surrounding National Park. Accommodation either Bed and Breakfast or in one of 3 Self Catering Cottages, available all year round.

☆☆☆ SPECIAL MID-WEEK BREAKS ☆☆☆

Hawkshead Brewery Ales always on tap
Coniston Brewery's Bluebird Bitter—CAMRA Champion Beer of Britain
regularly available here at the 'Kings'

Keswick PDF Adv

The Lowe Down.....

News has come though, in a letter from Ken Lowe, our well known and respected ex-Branch Chairman, of important events at the end of 2008.

The story can unfold in Ken's own words and the following is an extract from a letter received by the Editor.

"Myself and Jackie Tulip got married in ALBUQUERQUE, New Mexico, USA on 24th November 2008, whilst staying at my sisters home.

We were wearing our best wedding apparel that had cost us 'fortunes', i.e. myself in a Coniston Brewery 'Old Man Ale' Tee shirt and Jackie in her Watermill Brewery 'W'Ruff Night' Tee shirt. Whether Jackie had a 'W'Ruff Night later' is a closely guarded secret.

We visited two breweries whilst over in the USA, firstly Marble Brewery in Albuquerque in which Ted Rice, one of the two brewers, took us round. Small breweries in the USA are not small compared to the UK. Marble is about three times the size of Hawkshead, for example. Cutting out all the technical bits, it was an excellent tour.

After several samples of Amber Ale, IPA and Heffeweisen we were offered a half pint of a beer that Ted had nurtured in wooden bourbon whisky barrels for 6 months. You could certainly smell the bourbon and it was a golden amber colour. The taste was out of this world and the beer just slid down all too easily, but beware, the ABV was 8.5%.

The other Brewery was Trummer Pils in Berkley, Nr San Francisco CA. Once again, not small. The parent of

this company was based in Saltsburg, Austria. Their company in USA was set up in 2004 to try to get a foothold in the USA beer market.

Darren Maser, production manager, was our guide and showed us everything we wanted to see. One of the main points I remember is that they have to produce the beer 100% as it would be in Saltsburg and they have a quality control laboratory that would shame most UK hospitals. They said that currently 70% of production was bottled, the rest kegged.. The Brew-



ery won a World Beer Cup in 2008. The Magnolia Brew Pub on the Heights were serving six of their beers through authentic English hand-pumps. Anyway, we will be going back. See you all in October 2009" (*at our beer festival I hope, Ed.*)

Those of us in Cumbria and beyond who know Ken and Jackie will, for sure, be very pleased with this welcome news and wish both Ken & Jackie a very long and happily married life together.



GOLDEN FLEECE



Damian & Jennifer
Welcome You to The Golden Fleece

*Located just off A66 cross-Pennine route, ideal location to explore
the Eastern Pennines and Yorkshire Dales.*

Great home cooked food served daily

Local real ales

En suite accommodation

Dog friendly

Pool table, dominoes, darts plus other games

Regular entertainment and other activities

Golden Fleece, Main Street, Brough, Nr Kirby Stephen, CA17 4BL

T: 01768 342810

EVENTS DIARY & BEER FESTIVALS

- **9th March** - Branch Meeting ; Derby Arms, Witherslack Minibus £3 return. Ambleside 7.00pm; Windermere 7.15pm Kendal 7.30pm.
POTY 2009 Selection
- **w/e 21st March.** - Hike & Pint - advance notice; final details to be advised.
- **19th Mar to 21st March:** Wigan Beer Festival at Robin Park Sports Centre (opposite the JJB stadium), 15 mins from Wigan North Western Station (Free Bus available) More details at <http://www.wigancamra.org.uk/>
- **23rd March** - Social visit to Sportsman @Cowgill followed by a Branch visit to Dent Brewery. Afterwards a tasting of two possible new Dent beers at their Brewery Tap, the George & Dragon in Dent village together with refreshments courtesy Gary. Not to be missed!
Minibus (£3) from Ambleside (6.15pm); Windermere (6.30pm) and Kendal (6.45pm).
Also Dent will put on a free minibus for any members from Appleby, Ravenstonedale areas. We are very grateful for their offer; please try to take it up
- **April** Winter Beer Festival, White Horse, Kings Meaburn.
- **20th April** Route A66 Beer Crawl start at Brough & proceed NW (excluding Appleby we have just been). Minibus £3 Ambleside 6.45pm; Windermere 7.00pm Kendal 7.15pm via Ravenstonedale.
- **11th May** Branch AGM The Black Swan Ravenstonedale; details TBA
- **18th to 23rd May** Beer festival; Most Langdale Valley Pubs
- **4th to 7th June** Boot Beer Festival, in the Pubs of Boot. More details at: <http://www.bootbeer.co.uk/>
- **5th and 6th June** Keswick Beer Festival, at a Marquee at Keswick Rugby Club. More details at: <http://www.keswickbeerfestival.co.uk/>
- **17th - 23rd June** 1st Beer Festival Midland Hotel Appleby
- **12th to 14th June** Brewers Weekend, at Prince of Wales, Foxfield. More Details at: <http://www.princeofwalesfoxfield.co.uk/events.html>
- **17th to 19th July** Cider and Perry Weekend, at Prince of Wales, Foxfield. More Details at: <http://www.princeofwalesfoxfield.co.uk/events.html>
- **23rd to 26th July** Hawkshead Brewery Sumer Beer Festival, at the Beer Hall, Staveley. More details at : <http://www.hawksheadbrewery.co.uk/>
- **2nd to 4th October** Stout, Porter, Mild and Strong Ale Weekend, at Prince of Wales, Foxfield. More Details at: <http://www.princeofwalesfoxfield.co.uk/events.htm>

Where am I? The old Webb's Commercial Hotel, Stramongate, Kendal ;demolished along with the adjacent shop to open up Blackhall Road to New Road

Join CAMRA today!

Complete the Direct Debit form below and you will receive three months' membership free and a fantastic discount on your membership subscription. Alternatively you can send a cheque payable to CAMRA Ltd. with your completed form; visit www.camra.org.uk or call 01727 867201. All forms should be addressed to Membership Secretary, CAMRA, 230 Hatfield Rd, St Albans, AL1 4LW. Membership costs £20 for single membership and £25 for joint membership (or £22 single and £27 joint if not paying by Direct Debit).

Title _____ Surname _____

Forename(s) _____ DOB _____

Partner (if joint membership) _____

Address _____



_____ Postcode _____ Tel. no. _____

I wish to join the Campaign for Real Ale, and agree to abide by the Memorandum and articles of Association.

I enclose a cheque for _____

Signed _____

(Applications will be processed within 21 days)

 Instruction to your Bank or Building Society to pay by Direct Debit 	
Please fill in the form and send to: Campaign for Real Ale Ltd, 230 Hatfield Road, St Albans, Herts AL1 4LW	
Name and full postal address of your Bank or Building Society To the Manager _____ Bank or Building Society Address _____ _____ _____ Postcode _____	Originators Identification Number <div style="border: 1px solid black; padding: 2px; display: inline-block;"> 9 2 6 1 2 9 </div>
Name(s) of Account Holder (s) _____ Bank or Building Society Account Number <div style="border: 1px solid black; display: inline-block; width: 100px; height: 20px;"></div>	FOR CAMRA OFFICIAL USE ONLY This is not part of the instruction to your Bank or Building Society Membership Number _____ Name _____ Postcode _____
Branch Sort Code <div style="border: 1px solid black; display: inline-block; width: 100px; height: 20px;"></div>	Instructions to your Bank or Building Society Please pay CAMRA Direct Debits from the account detailed on this instruction subject to the safeguards assured by the Direct Debit Guarantee. I understand that this instruction may remain with CAMRA and, if so will be passed electronically to my Bank/Building Society.
Reference Number <div style="border: 1px solid black; display: inline-block; width: 150px; height: 20px;"></div>	Signature(s) _____ Date _____
<small>Banks and Building Societies may not accept Direct Debit Instructions for some types of account.</small>	

BREWERY UPDATES

DENT BREWERY

Business is holding up extremely well despite the doom & gloom. Two new beers to appear soon.

HAWKSHEAD BREWERY

New beers: In 2009, Hawkshead are going to produce some new occasional beers. First up will be "Organic Oatmeal Stout." This will be an organic version of the oatmeal stout brewed as the base of their Damson Stout. It will be in cask and bottle. Hawkshead Brewery and one of their bottlers, Hambleton Ales, have both been organically certified by the Soil Association.

For the third year running Hawkshead will run a cask ale bar at Damson Day in the Lyth Valley (April 18th) Because of the failure of the 2008 damson crop they may not be able to brew their customary annual damson beer. However they have a few casks of aged Damson Stout, which they have been cellaring for 12 months, and which they will broach at Damson Day - an interesting one for aficionados of matured beer.

Gold is dead -- long live Lakeland Gold: "Gold" in bottles has been renamed "Lakeland Gold," to be the same name as the cask version. And it is the first of their bottled beers to go into new lightweight bottles, which are a third lighter. Gradually all their bottled beers will put into lightweight bottles.

The twice yearly SIBA (Society of Independent Brewers) Champions beer festival at The Beer Hall continues to grow. February's was the biggest yet and again was notable for the large number of customers, youths and women in particular, who were new to real ale. SIBA's Local Industry Brewing Report for 2009 reports an average INCREASE in sales by SIBA brewers of 20%! And that is as beer sales in general decline.

KIRKBY STEPHEN BREWERY

Congrats to all at the Brewery who have worked hard to get the Brewery off the ground, in this last few days; we can't wait to sample your first ale 'Ruskin's bitter abv4.1%. More details in the next issue and on their website at <http://www.kirkbylonsdalebrewery.com/>

TIRRIL BREWERY

Another new beer is being investigated and there may be more positive news in the next edition. Business still pretty good despite the economic situation.

WATERMILL see article on page 24.



THE GEORGE & DRAGON DENT



DENT BREWERY TAP HOUSE

- SET IN THE HEART OF PICTURESQUE DENT VILLAGE.
- FRIENDLY & WELCOMING INN
- WITH EN-SUITE ACCOMMODATION IN ALL ROOMS (FAMILY ROOMS AVAILABLE)
- REAL LOG FIRES COMPLEMENT THE LOCALLY SOURCED PRODUCE FOR OUR MAIN MEALS AND BAR SNACKS ALIKE
- OUR OWN BREWED REAL CASK ALES ARE A MUST.
- WALKERS AND DOGS WELCOME
- HOURS 10.30AM till LATE- 7 DAYS A OPENING WEEK
- LUNCH 12 – 2.30pm ; EVENING MEALS 6 – 8.30pm

SHOULD YOU REQUIRE MORE INFORMATION OR A
TOUR OF THE FAMOUS DENT BREWERY
PLEASE CONTACT US ON
015396 25256

www.thegeorgeanddragondent.co.uk
mail@thegeorgeanddragondent.co.uk



DENTDALE MUSIC & BEER FESTIVAL
26TH-28TH JUNE 2009
www.dentmusicandbeer.com
FREE FREE FREE FREE FREE FREE



EASTER HOLIDAY

WATERMILL
INN & BREWING Co.

**BEER
FESTIVAL**

Friday 10th to
Sunday 19th April

24 handpumps all cellar cooled
Food served every day 12-9pm
Live music - see web for details
On the 555 bus route
Windermere/Steveley train 2 miles



www.Lakelandpub.co.uk
tel 01539 821309
Ings village near Windermere

THE WATERMILL
INN & BREWING CO

Printed by Kent Valley Colour Printers - Kendal (01539) 741344