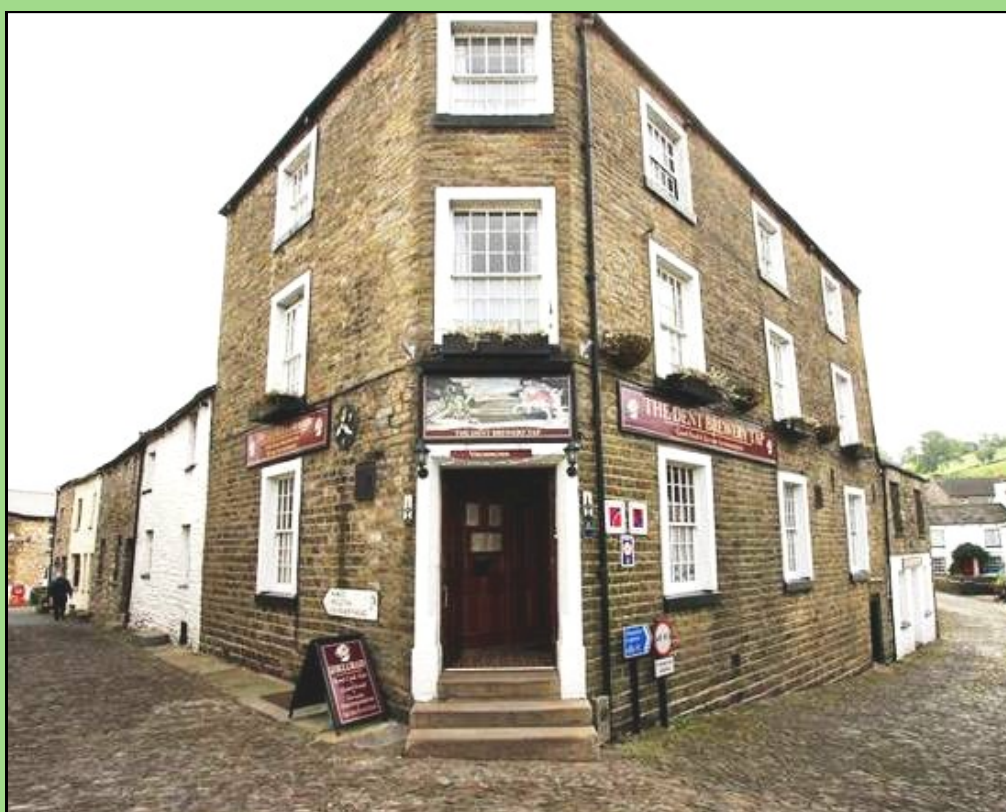


Spring 2010

Edition 39

# LAKES & ALE



Newsletter of the  
Westmorland Branch of  
The Campaign for Real Ale

[www.camrawestmorland.org](http://www.camrawestmorland.org)



Hawkshead pdf done

**Front :***POTS Winter Winner George & Dragon Dent*

# Editorial

A welcome to all readers

What a start to the new year! The cold weather certainly provided some challenges to both Westmorland brewers and pubs. Tirril brewery was frozen out for two weeks but recovered, deliveries for all must have been difficult and some of our pubs that are situated outside towns & villages seemed to suffer a loss of trade both beer & food over Christmas, whilst others saw increased trade. Hopefully, all will recover in the coming months.

This issue is a little slimmer this time round as events and visits seemed to have dried up a little but we have a good programme of events and many beer festivals coming up in the next few months. So look at the events page and book your times early. We must congratulate Gary and all the staff at the George & Dragon, Dent for winning the Pub of the Season this Winter. (P22). The G&D is the tap of Dent Brewery and this is reflected in the range of their beers on sale

It is exciting to see yet another Westmorland Brewery starting up (see p35) and we wish the Winster Brewery every success in their venture. Who will be next?

My thanks to both Roger Davies, David Brown and David Prickett for their continued submission of articles. Have you got something to say or report? Please contact me as indicated below.

Regards and great but safe drinking in moderation this Spring.

Cheers *David Currington* Editor

L&A Contact: David Currington, Editor  
(01539) 732599  
or dadcurrington@hotmail.com

## **Annual Subscription**

To have a copy of Lakes & Ale sent to you quarterly by post, please send your contact details to:

Alan Risdon  
4, St. Anne's Court  
Ambleside  
Cumbria  
LA22 9ED

Together with £3 to cover the cost of postage for four issues.  
Cheque payable A Risdon

## **Advertising Rates**

1/4 page £25 per edition  
1/2 page £40 per edition  
£135 for 4 paid up front  
Full Page £75 per edition

## **ADVERTISING EDITOR CONTACT**

Alan Risdon  
Tel; 015394 33912  
[www.camrawestmorland.org](http://www.camrawestmorland.org)

## **COMPLAINT/COMMENT?**

The views expressed in this publication are not necessarily those of the Editors, CAMRA Ltd., Westmorland Branch or any other branch of CAMRA, but of the individual contributor. No part of this publication may be reproduced without prior permission.

Cumbria Trading Standards Office: County Hall, Kendal. Tel: 01539 773577.

Westmorland Branch of CAMRA : Editorial (01539) 732599 ; Advertising: (015394) 33912.



## From The Chair...

Dear Reader

### **2011 Good Beer Guide**

As you read this the final stages of compiling the 2011 and 38<sup>th</sup> edition of the CAMRA Good Beer Guide (GBG) will be underway. For many people the GBG is their bible as it lists all breweries and real ales that are produced in the UK plus the Pubs, Clubs & Hotels that serve good real ale on a County basis. These venues cannot buy their way into the GBG, in fact all the entries are free and are identified and nominated by CAMRA members. It is also extremely useful if you are away from your home patch and trying to find a good pint of real ale.

**So how does this work?** CAMRA branches regularly discuss how their local pubs and beers are faring. This intelligence is used to identify which pubs are consistently serving good quality real ale and therefore are worthy of surveying for consideration in the GBG.

Systematic surveying takes place from November to January, and this year over 15 Westmorland members were involved in this surveying. At the selection meeting 23 members listened to the results of the surveys and then democratically voted. Our branch surveyed 42 venues but can only nominate 22 due to space constraints in the guide, so competition is both very high and healthy.

### **What are we looking for?**

Once good beer quality is established other important factors come into play such as how welcoming are the staff, LocAle, architecture, history, food, creature comforts, oversized glasses and do they hold a beer festival. It is always the beer that comes first as we believe that if the publican looks after his cask beer then everything else in the pub - from the welcome through food to the state of the toilets - are likely to receive the same care. CAMRA will de-list pubs if the beer quality falls below an acceptable standard. You can keep your copy of the GBG up to date by visiting [www.camra.org.uk](http://www.camra.org.uk) click on Updates to 2010 where you will find the changes to pubs and breweries.

*(Continued on page 5)*



*(Continued from page 4)*



*A great turnout, at the Riverside Hotel, of Westmorland Branch members for the annual ritual of voting for the 22 pubs to go into the GBG, this time for 2010. This of course also involves some drinking at the same time to lubricate our minds.*

The GBG can be sent to CAMRA members automatically for an annual Direct Debit currently £10.00 or non-members can purchase the guide from bookstores for £15.99.

I hope this helps you to take more interest in the Good Beer Guide and discover in September 2010 when the GBG is published the results of Westmorland CAMRA's selection and 2011 entries.

**Tutored Beer Tasting Session**  
**Friday April 9th, 7.15pm** at Hawkshead Beer Hall, Staveley. Join us in learning more about the wonderful world of tasting real ales. Open to CAMRA members and other beer lovers. No cost for tutoring just pay for the beer you drink.

**Chris Holland**  
Westmorland CAMRA Chair

## The Cumbria Tasting Panel.

### Why is it important?

CAMRA has operated a tasting programme nationally since 1989 with the aim of providing objective consumer information on the character and quality of beer in the trade. Our Westmorland Branch is part of the Cumbria Tasting Panel and it provides tasting notes for county beers for the brewery section of the Good Beer Guide (GBG), and more importantly, nominates beers for the Champion Beer of Britain competition (CBoB) and Champion Winter Beer of Britain (WCBBoB). It just so happens that the regional tasting co-ordinator for the North West is Linda Johnston of the Prince of Wales, Foxfield and she also co-ordinates our Cumbria Panel. This is made up of members from all four Cumbrian branches: Westmorland, Furness, West Cumbria & Western Lakes and Solway.

The Cumbria Panel meets up at regular intervals throughout the year to taste and score specific Cumbrian brewed beers on tasting cards. On these we note in particular aroma, taste, aftertaste, appearance, body and overall impression for each beer and indicate at which hostelry it was sampled. The sessions help us "educate" our palates to a fairly consistent way of evaluating, which ensures more reliability when later we work separately throughout our

vast area. There are about 12 regular tasters from across the county who regularly submit tasting cards but this is supplemented by many more who come along intermittently and provide valuable back-up data. If the tasting cards are not submitted - no matter how good a beer is, it cannot be entered into the national competition. It's up to us to make sure our



Mild



Porter & Stout

good beers are in with a chance.

At the last



Light Bitter

two Westmorland Beer Festivals we have offered training sessions to both CAMRA members and interested members of the public and these have proved very popular.

We intend holding more regular tasting training sessions in Westmorland during the next year in readiness for the 2012 GBG, including Hawkshead Beer Hall on either 26/3 or 2/4, so anyone keen to find out more, or who thinks they might like to join us, can do so by phoning the branch tasting co-ordinator, Marilyn Molloy on Kendal 720407.

# **THE CUMBRIAN CHALLENGE 2010** **MICRO-BEER FESTIVAL**

**at**  
**Burgundy's, Lowther St., Kendal**

**Thurs March 25th 6pm-11pm**  
**Friday March 26th 12-11pm**  
**Saturday March 27th 12-11pm**

This 14th pint-size "Taste of Cumbria", offers a sample of beers from the county's small independent brewers side by side under one roof at Burgundy's in Kendal.

**Local beers - made with local waters - by local people**  
**- for local people**

Covering the county the secret recipes of our small independent brewers will be served alongside each other to discover the county's favourite pint.

The *Special Westmorland Sausage* created especially for this event eleven years ago by local Master Butchers, Higginson's of Grange-over-Sands, has gained legendary status and will again be sizzled to help you soak up all those local ales.

**Come along and sample**  
**a truly unique**  
**Pint & Sausage**  
**all from**  
**our own county**  
**Give them a Go!**

# THE SUN

CONISTON



A unique mix of bar, restaurant & four star inn, with the kind of comfortable informality and atmosphere that many attempt but few achieve.

At its heart is a great pub recently refurbished and extended across two floors with up to 8 real ales on tap and freshly prepared food using locally sourced ingredients.

bar, restaurant & 4 star inn

THE SUN CONISTON LA21 8HQ

t 015394 41248 f 015394 41219 e info@thesunconiston.com www.thesunconiston.com

## TIRRIL BREWERY

([www.tirrillbrewery.co.uk](http://www.tirrillbrewery.co.uk))

Fine Westmorland Ales



Always available at: The New Inn, Brampton,  
Appleby-in-Westmorland (017683) 51231  
and at selected outlets within Cumbria and North Lancashire

## REAL ALE

### New York Style!

Last time, in Lakes and Ale, I started out on a trip across the USA, this time, I'm going to break that trip by going to... New York.

Staying for a week near Times Square last November and with quite a lot to fit in, I only sampled one local brewpub but as it was only five minutes walk from our hotel, what incentive was there? It is the Heartland Brewery and has six outlets in Manhattan with a new one coming along this year. Their slogan is "drink fresh ales and lagers for your daily pleasure". Claiming to be the first American style brewpub in NYC when it opened in 1995, it says "our city was not the hotbed of brewpubs, beer bars and evolved beer drinking experience it is today." It claims its pioneering ignited New Yorker's passion for craft beers and has consistently won awards. It brews NYC's freshest beers and brewmaster Kelly Taylor says "it's really important to brew locally and get the flavours the brewer had in mind and taste the beer how it is supposed to taste." I think we would all go along with that.

As I mentioned before, US craft

brewers are not constrained by style of beer and Heartland boasts no less than 16 brands, 8 of which are seasonal. They range from light ales, wheat beer, stout, barley wine, porter, to lagers including a red and a black. A few seasonal examples, Smiling Pumpkin Ale is around from September to November to take in Halloween, a huge celebration in the US. And very nice it was too. From December to January it is replaced by Old Red Nose Ale "drink old red nose for a little Blitzen", to cover Christmas. From January to mid February Not Tonight Honey Porter takes over for Valentines. My "local" was on 43rd street just yards from Times Square and next door is Heartland's HB Burger bar claiming the finest burgers in the US. I've done a fair bit of research



and wouldn't dispute their claim. All outlets serve an excellent selection of freshly cooked food, indeed a local couple (he from Denmark she from El Salvador, some interesting accented

*(Continued on page 18)*



# MANOR ARMS

NO JUKE BOX

NO PLASMA TV

JUST GOOD  
CONVERSATION

PUB of the YEAR 2008  
CAMRA CUMBRIA



**FREE HOUSE SINCE 1768**

**CAMRA  
WEST PENNINES  
PUB OF THE YEAR  
2008**

3 DIAMOND  
ENSUITE  
ACCOMMODATION

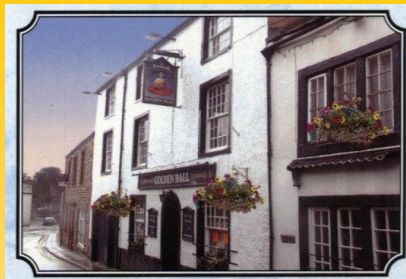
HOT SNACKS  
SERVED TILL 10pm

**Family run traditional pub with 2 real fires, set in a quiet market town on the edge of the Lake District**

Regular Beers are: Yates Bitter, Copper Dragon Golden Pippin and another from Cumbria. Also up to 6 other countrywide Guest Beers

**OPEN ALL DAY - EVERY DAY**

Manor Arms, The Square, Broughton-in-Furness Tel: 01229 716286



Andy & Jean welcome you to the

## Golden Ball

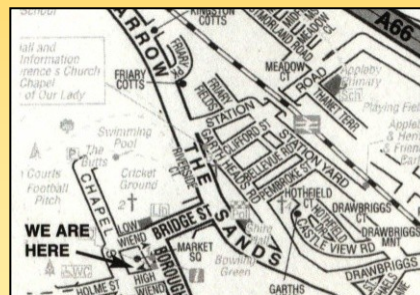
4 High Wiend  
Appleby  
Cumbria  
CA16 6RD

Tel: (017683)51493

Email: [jesveinsson@hotmail.com](mailto:jesveinsson@hotmail.com)

CAMRA WESTMORLAND PUB OF THE SEASON SUMMER 2006

- Cosy friendly atmosphere
- Offering Real Ales, Quality Lagers & Spirits
- Homemade country-style bar food, using local fresh produce, available daily
- Pub Quiz, Darts, Dominoes & other pub games
- Sheltered Beer Garden
- Accommodation available
- Ideal location for Eastern Lakes, Eden Valley & North Pennines



## KENTMERE'S OLD INN

### LETTERS FROM THE LAKES.

*Abridged extract from an article in the Lunesdale Chronicle of 1820*

DEAR TOM,

Our enquiries were suspended, and Dick's rustic wit was silenced, by our arrival at the summit of Nan Bield. The ridge was not more than three feet over; and we descended very rapidly into the vale of Kentmere. "We quickly found we had left the rainy regions, and were entering upon a fine evening scene. But we were too much soaked with the wet to feel any enjoyment in the varied prospect of hill and dale, water, wood, and plain, which here presented itself. A few miles of rough mountain road brought us to the only inn this valley contains.

You can form no idea of the comforts and accommodations of a genuine Lake inn of the old school. No sign, or even lettered board, announced a house of refreshment.

My uncle approached the door of what Dick assured us was the only public house in the vale. "*That cannot be an inn,*" exclaimed my father. My uncle opened the door, and looking into the house, was inclined to hold the same opinion.

However, to make the best apology he could for his intrusion, he asked if there was an alehouse any where near. "*This is o'ther is,*" replied an

old coarse voice. My uncle turned round, and beckoning to us, said, "*It is an inn.*" And we followed him into the house.

The floor was spread with tubs, pans, chairs, tables, piggins, dishes, tins, and the other equipage of a farmer's kitchen. In the dusk of the evening, and the darkness of the house, the things were only just visible and we felt some hesitation in approaching the fire, lest some accident might befall us in working our way through the innumerable obstacles that intervened between us and the cosy hearth.

A robust girl, in a short petticoat of Kendal *bump*, however, with more agility than might have been expected from her very unpromising appearance, presently pushed the tubs and pots aside, and by that means formed a very tolerable avenue to the fire. When our Amazonian Hebe had safely conducted us to the fire, she gathered the children's stockings, shoes, frocks, skirts, etc. which occupied every chair in that part of the house; and, by a little skill in placing the chairs upon the broken



*Low Bridge today*

2)



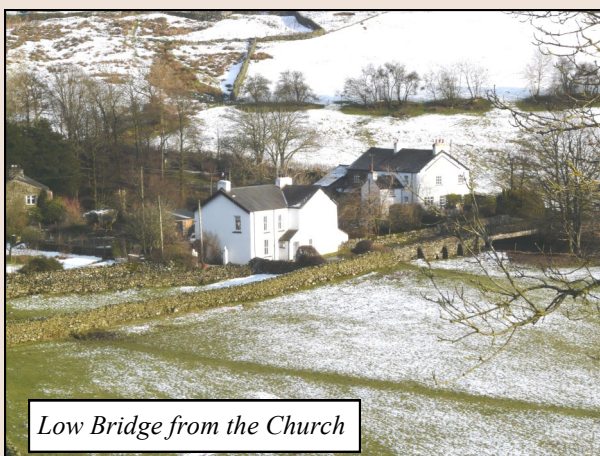


1860's map

(Continued from page 11)

flags by the hearth, she presented each of us with a tolerably comfortable seat.

Thus far we had advanced into the 'bowels of the land' in silence," But my uncle now requested that



Low Bridge from the Church

something might be added to the fire, as we were thoroughly wet, and very cold. "Put some mear peats tetfire," said the landlord, "thor folks are varra ill drabbled." While the maid was reconstructing the fire, we had time to reconnoitre our quarters.

There was no fire-place: but a paved area of about two square yards, raised perhaps six inches from the floor, and attached to the end wall, formed the hearth where the fire burned. Parallel to the end wall, a beam, belonging the room floor above us, crossed the house about two yards from the end wall. The space above this beam was shaped like a pyramid; gradually tapering to the top, where it could not be above a yard square. Up this funnel or chimney the smoke ascended in fine convolving wreaths, very amusing to us, as it gave a dingy hue to the small speck of sky which appeared like the lid of the chimney.

Under this huge vacant pyramid, and within what they term the chimney wing, we sat, on one side of the hearth. On the other, close to an oven in the wall, sat the ancient landlord; and beside him sat the landlady, a good looking

(Continued on page 14)

# CONISTON BREWING CO.



EST. 1995

Coppermines Road, Coniston, Cumbria LA21 8HL

Tel: (015394) 41133

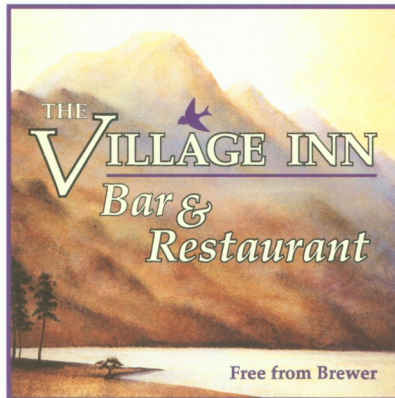
Email: [info@conistonbrewery.com](mailto:info@conistonbrewery.com)

Website: [www.conistonbrewery.com](http://www.conistonbrewery.com)

**Hidden away behind the Black Bull in Coniston is the Coniston Brewing Company.**

**This outstanding brewery, run by Ian Bradley, is where Bluebird Bitter is made. This 3.6% session beer won Supreme Champion Beer of Britain 1998 at the Great British Beer Festival in London.**

**Coniston Brewery use only the finest ingredients in their brewing process. The water used by the brewery comes from high up on the fells surrounding Coniston.**



**St Martins Hill Lake Road  
Bowness-on-Windermere  
Cumbria LA23 3DE**

**English Lake District**

**015394 43731**

***email [villageinns@hotmail.com](mailto:villageinns@hotmail.com)***

***[www.villageinnbowness.co.uk](http://www.villageinnbowness.co.uk)***

***Opposite the Church,  
Close to the Lake***

***Quality Beers - Hand Pulled - Local & National***

***Quality Food - Locally Sourced Produce  
Served in our Bars & Restaurant***

***Patio & Beer Garden - Open All Year***

(Continued from page 12)

woman with a very young infant on her knee. In the middle, was our mountain Venus of a waiting maid erecting a fire. This seemed to be a feat of skill; for she first collected all the red fragments of the former fire, and placed them in a neat heap. Then she surrounded this heap of fire with a circle of half peats, set on end; and again with two rows of whole peats set on end. The hollow in the middle was then filled with small fragments of peat, so as to rise highest in the middle. In about five minutes the fire began to burn brightly.

"*Thear*," said the landlord, "*thee jo is in a good eumor to neet fort fire loos*."

Hitherto we had been sufficiently amused with their rude but well meant endeavours to render us comfortable. But as we began to warm, we began to feel faint; and my uncle requested the maid to bring my sister a glass of warm shrub, as he supposed they would keep no wine, and each of us a glass of his favourite rum and new milk. The girl stood and looked 'unutterable things'. But the landlord replied, "*We hae-nae rum*"

"*A little gin and warm water then*," said my uncle. "*We niver keep nae spirits*," replied Boniface. "*Let us have something at any rate*," replied my father. "*We hae capital ale*," observed the landlord; "*bring 'em ittery yan a pint*."

"*And a pint for your master*" added my uncle. The landlord's face brightened up at this; and all was very pleasant till we tasted the

nauseous beverage. However it was all we could procure; and it was our duty to submit, to necessity. Beside, whatever our comforts might be, we might rank them among the curiosities of our lake tour.

After much contriving on the part of the host and hostess; and many assurances on ours, that we could sleep any where, we were conducted to our apartments. The room appointed for me was any thing but neat. However it had one convenience—the casement was an excellent ventilator; and I was convinced that the circulation of air would dry my clothes, if carefully spread out over the chairs, of which there were plenty. The bedstead was, like the rest of the house, entirely on the model of the old school. The sides were of black oak, about twelve inches deep, by about four thick. The posts were about two feet and a half high from the floor.

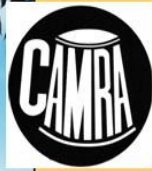
The curtains, which were composed of patches of old paper hangings of different patterns pasted together, were suspended from hooks in the ceiling.

I slept very soundly and when I awoke next morning, my clothes were thoroughly dry. I dressed myself as well as I could but the delicacies of a wash-hand basin or a looking glass seemed to be luxuries unknown to the unsophisticated natives of Kentmere.

As several doors opened out of my room, I had some difficulty in

(Continued on page 24)





**VOTED**  
**CAMRA Westmorland**  
**PUB OF THE YEAR**  
**2007 - 2008**

*The FAMOUS*  
*Eagle and Child Inn*  
*- Staveley -*

**5** everchanging real ales  
**Scrumpy Ciders**

**Fresh Local Food**

**12-2.30 6-9pm**

**westmorland gazette**  
**food pub of the year**

**TRY OUR GREAT**  
**VALUE**  
**LUNCH FOR A £5**  
**12-2.30 Mon to Sat**

**NEXT BEER FESTIVAL**  
**MAY DAY BANK HOLIDAY**  
**1ST 2ND MAY**



**[www.eaglechildinn.co.uk](http://www.eaglechildinn.co.uk)** **01539 821320**



## CAMRA WINTER ALE FESTIVAL Manchester, January 2010

### Six of the Best

By David Prickett

We made our way to the 2010 Winter Ales Festival not knowing quite what we were getting into. This was because it was our first visit and the festival had just moved to its new site at The Sheridan Suite, "The Venue," Oldham Road, Manchester.

We did successfully find the place, travelling by foot, but it did seem to be a very long "1.1 miles" as was mentioned in the web site directions, so we used the regular bus service from then on. The bus stops were immediately outside the festival.

Any of you who stayed away from the festival because it was "Just Winter Ales" which could only be "dark and strong" were very wrong to do so. Whilst sumptuous, mouth watering, dark beers were available, so were light coloured Milds and Bitters, Golden Ales as well as an exciting range of Imperial Pale Ales. The gravity range varied from 0.5%; alright this was the "Low Alcohol" Dandelion and Burdock or Sarsaparilla; moving through 3.2% Milds up to 10.0% Barley Wines. If this was not enough for you, there was also a wide range of Cider and Perry as well as a continental Bottled Beer stand and a German Draught Beer stand. There were interesting beers of all types available and many of them had a noticeable

"Wow" factor.



Many of the people who we talked to at the festival positively commented about the new venue and in particular the greater amount of seating available as well as, of course, the range and quality of the beers on offer.

Before moving onto my "Six of the Best," I must stress that all the beers have been personally picked and that any relationship between your taste-buds and mine, whether living or dead, are purely coincidental. Neither I nor CAMRA Westmorland accept any liability if you choose to drink any of them; but I'm fairly certain that you'll really enjoy them if you do so!

It was extremely difficult, but here are the "Six of the Best," in reverse order:

*(Continued on page 18)*



## Branch Officers and Contacts

<b>Chairman:</b> Chris Holland	(01539) 733859 Email: <a href="mailto:chrisjudith@yahoo.co.uk">chrisjudith@yahoo.co.uk</a>
<b>Vice Chairman &amp; Social Secretary:</b> David Butler	(01539) 433912 Email: <a href="mailto:marleneanddave@btinternet.com">marleneanddave@btinternet.com</a>
<b>Secretary:</b> David Currington	(01539) 732599 Email: <a href="mailto:dadcunningon@hotmail.com">dadcunningon@hotmail.com</a>
<b>Treasurer:</b> Tony Jackson	(015394) 217073 Email: <a href="mailto:a.jackson52@btinternet.com">a.jackson52@btinternet.com</a>
<b>President:</b> Alan Risdon	015394 33912 Email: <a href="mailto:alan.risdon@btinternet.com">alan.risdon@btinternet.com</a>
<b>Membership Secretary/Pubs Officer:</b> Ivor Chittenden	015394 37272 Email: <a href="mailto:i-e-chittenden@hotmail.co.uk">i-e-chittenden@hotmail.co.uk</a>
<b>Branch Contact/Transport Officer:</b> Duncan Crabtree	01539 735739 Email: <a href="mailto:d.p.crabtree@btinternet.com">d.p.crabtree@btinternet.com</a>



*(Continued from page 16)*

- 6) Wapping 5.0% "Smoked Porter,"
- 5) Brewdog 6.2% "Punk IPA,"
- 4) Summer Wine Brewing  
4.2% "Holmfirth IPA,"
- 3) Wolf 4.8% "Woild Moild,"
- 2) Robinsons 6.0% "Old Tom  
Chocolate,"
- 1) Robinsons 6.0% "Old Tom Ginger."

We thoroughly enjoyed ourselves at the Winter Ales Festival and we hope to revisit it in the future. We also thoroughly recommend that you give strong consideration to visiting, or revisiting, the festival next year.

**David and Lynne Prickett**

*2nd February 2010*

*(Continued from page 9)*

Spanish ) claimed the Heartland's Thanksgiving Dinner was as good as any.

You can sample by buying a flight of seven thirds of a pint for \$15 or at the other end of the scale there is a Beer Goddess, no less than 6.3 pints in one glass. A group of girls from Luxembourg sampling a flight on their way home from Hawaii



(unlikely I know but it is New York ) found the orange and coriander flavours of the Indian River Light not to their taste, something they were quite loud about. Have a look at their brewery website, [www.heartlandbrewery.com](http://www.heartlandbrewery.com)

New York is a city to walk. Neighbourhoods all have different characters and are best enjoyed at a leisurely pace. If it is warm and sunny, it's not long before some

refreshment seems a good idea. This came upon us as we wandered through the Cast Iron district near Soho. A very smart bar, Bar 89 on Mercer Street, offered a menu with a choice of around 10 craft beers. I renewed my acquaintance with #9 from the Magic Hat brewery in Burlington, Vermont whose wacky brewhouse I visited some years ago. I followed this with an organic amber ale from the Peak Brewery in Maine. All very pleasant.

So never mind Big Apple, there's some serious beer sampling to be had in NYC.

Roger Davies 01/10







## THE OLD DUNGEON GHYLL HOTEL GREAT LANGDALE

**CAMRA Westmorland  
PUB OF THE YEAR  
2008**

UP TO 8 REAL ALES INCLUDING  
YATES BITTER  
WESTON'S OLD ROSIE SCRUMPY CIDER  
EVERY GOOD BEER GUIDE SINCE 1986  
EVERY EDITION OF THE GOOD PUB  
GUIDE

FOOD SERVED 12.00 to 2.00 & 6.00  
to 9.00 EACH DAY

PLEASE BOOK FOR DINNER IN  
THE HOTEL

☎ 015394 37272

[WWW.ODG.CO.UK](http://WWW.ODG.CO.UK)



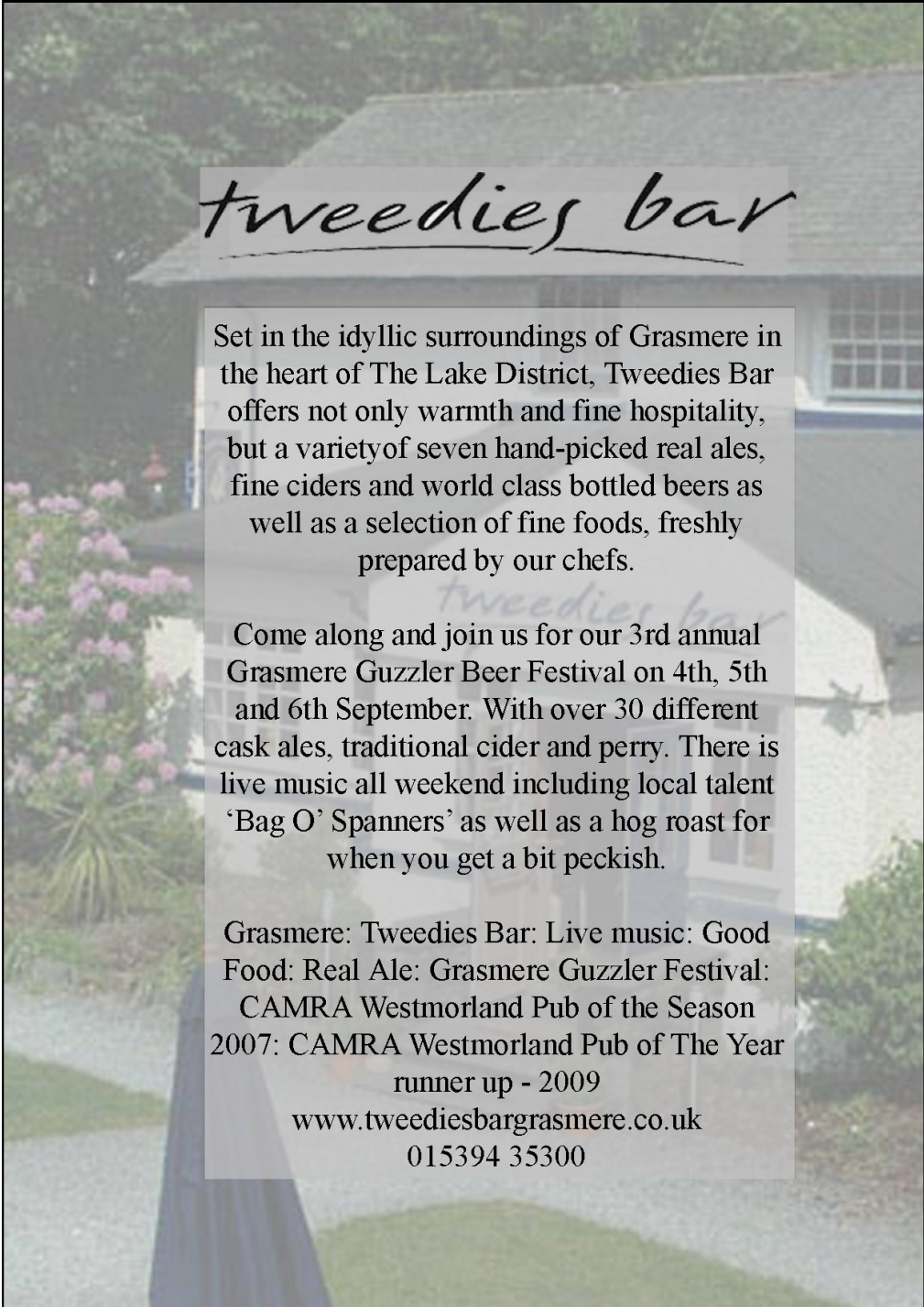
### *17th Century Traditional Country Pub*

Excellent home-made food with a modern twist,  
local beef and lamb supplied by Abbots Reading Farm

- 6 Real Ales
- 40 Seater Restaurant
- Accommodation
- 2 Open Fires
- Good Pub Guide 2007
- Good Beer Guide 2007
- Free House, Children Welcome
- Beer Garden

**Bouth, Ulverston,  
Cumbria LA12 8JB**

**Telephone 01229 861229**  
[www.bed-and-breakfast-cumbria.co.uk](http://www.bed-and-breakfast-cumbria.co.uk)  
e-mail: [nigelwhitehart@aol.com](mailto:nigelwhitehart@aol.com)



## *tweedies bar*

Set in the idyllic surroundings of Grasmere in the heart of The Lake District, Tweedies Bar offers not only warmth and fine hospitality, but a variety of seven hand-picked real ales, fine ciders and world class bottled beers as well as a selection of fine foods, freshly prepared by our chefs.

Come along and join us for our 3rd annual Grasmere Guzzler Beer Festival on 4th, 5th and 6th September. With over 30 different cask ales, traditional cider and perry. There is live music all weekend including local talent 'Bag O' Spanners' as well as a hog roast for when you get a bit peckish.

Grasmere: Tweedies Bar: Live music: Good Food: Real Ale: Grasmere Guzzler Festival: CAMRA Westmorland Pub of the Season 2007: CAMRA Westmorland Pub of The Year runner up - 2009

[www.tweediesbargrasmere.co.uk](http://www.tweediesbargrasmere.co.uk)  
015394 35300

## Support CAMRA Westmorland

**CAMRA Westmorland have issued a new poster depicting all the known Kendal Pubs on an imaginary Kendal Underground.**

**NEW**

Available from the following:  
Signature Art Gallery, 16 Kirkland,  
or Soutergate Gallery, Highgate.  
or contact Branch Secretary on  
tel:(01539) 732599 or at  
([dadcurrington@hotmail.com](mailto:dadcurrington@hotmail.com))

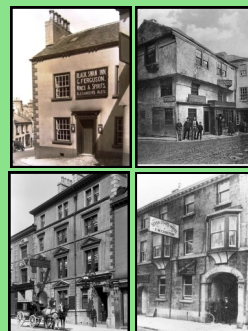


**Also**

Now available.  
An underground map of all the current Breweries in CUMBRIA together with their main brews. Copies from [don.m.morris@btinternet.com](mailto:don.m.morris@btinternet.com) or (01539) 821224

## A Pictorial Record Public Houses in Kendal

£14.95



By David Currington

Published by Westmorland Branch of CAMRA

**STOP PRESS**

A special Edition of the Breweries of Cumbria map has been produced to raise money for the Cumbria Flood Relief Scheme  
Price £15 + PP.  
See Drip Tray (P31) for details.





## PUB OF THE SEASON Winter 2009/10 GEORGE & DRAGON, DENT



*Gary Kirby receives the POTS award from Branch President Alan Risdon*

Dent on a midwinter weekday was as quiet as the proverbial church mouse, unlike the summer months when Dent attracts visitors from far and wide. In the village centre they might well have come across the Inn that is the subject of this Article

### **The George & Dragon.**

Run as the tap of the Dent Brewery which is just a mile or two up the valley, the pub has undergone somewhat of a renaissance since Gary Kirby took over a year or so ago. The bar, besides welcoming customers this time of the year with a real open fire, usually displays most if not all the Dent range of ales in production

at any one season, plus sometimes another local ale. The beer is always in excellent condition, (that's why it has the Cask Marque accreditation, and it is always possible to have your drink in third glasses; That way you can taste them all without getting too merry!

The pub has a really good reputation for its locally sourced food and accommodation. Gary

and the Dent Brewery have always been great supporters of CAMRA's aims and objectives and the Branch were very pleased to be able to make this award. It remains to be seen if Gary has pulled the pub into the next Good Beer Guide due out in October next. Let's hope so!



*Mine host Gary behind 'six of the best'*

# Alexander's

## THE PUB



Les Brown, the pub manager, and all his staff welcome one and all to their newly redesigned & refurbished establishment. Located in the grounds of the Castle Green Hotel, it now truly is:

- A great place to drink four fine, ever changing, local real ales  
in a warm and friendly atmosphere
- A great place to enjoy local food cooked to perfection
- A great place to enjoy the view over Kendal and the southern fells
- A great pub where it is easy to park
- A great hotel to stay if you are visiting the Lakes

**In short - just like Alexander 'It's great'**

**Open everyday from 12 Noon**  
food served all day from 12 noon until 9.30pm

Alexander's the Pub, The Castle Green Hotel,  
Castle Green Lane, Kendal Cumbria LA9 6RG  
Tel (01539) 797017

<p style="text-align: center;"><i>Beer-Cubes</i></p> <p>There are to be experiments in "concentrating beer by freezing it". The result will probably be the issue of small beer. It is by one of my heroes J.B.Morton whose pen name was (Beachcomber), &amp; who wrote in the Express for over 40 years. He hated petty regulations and was also a great ale and pub fan. He had a great distrust of what he called artificial foods. The extract is from 'The Tibetan Venus' 1951.</p> <p><i>A drinker will show his countersigned permit to the Catering Police at the door. He will then have his licence, pass, certificate, fingerprint card, references, letter of introduction, and other credentials checked by the reception Hostess, the Liquor Police, the Drink Inspectors, and the Resident Controller. He will hand his money to a Deputy Controller, who will place it in a hygienic slot-machine.</i></p> <p><i>Meanwhile an Official Overseer will lead him to a chromium stool, and he will be handed two beer-cubes from the machine. He will be empowered either to suck them on the spot, or take them away, if signed for.</i> (Beachcomber)</p>	<p style="text-align: center;"><b>Definition of an Innkeeper.</b> <b>(From an article of 1822)</b></p> <p>A tavern-keeper is a man above all others, who should be a strict follower of St. Paul, "all things to all men," for the good of himself. His stomach should be made of India rubber, ready to expand at his customer's command; his mind a vacuum; his head a colander, through which his brains are filtered as the caprice of the company may require: he must drink with the drunkard, eat with the glutton, have no opinion of his own, and receive insult according to rank. For instance, a lie from a lord, a d—n from a doctor, and a kick from a captain ; in short, he should resemble one of those appendages to pipes and tobacco, called a spitting box, or general receptacle to receive the offscourings of empty heads and full stomachs. If he be not this, or something like it, he will never prosper. If his mind be independent, and he have a spirit equal to the support of it, the Beiges of his wine-cellar will rust for want of use; and the only sale of his wares be through the medium of the auctioneer's hammer.</p>
<p><i>(Continued from page 14)</i></p> <p>determining which should lead me to the apartments below: I however fixed upon one, where I found our Kentmere bar-maid fast a sleep. I passed into another, occupied by the children. A door out of this led me to the stone stairs, by which I descended to our last night's supper room.</p>	<p>"Good -morrow te ya," said the landlord; "<i>heres a wet imworning.</i>" .....</p> <p>Your loving brother, LEONARD ATKINS. Kendal, Aug. 1820.</p>



# BARNGATES BREWERY

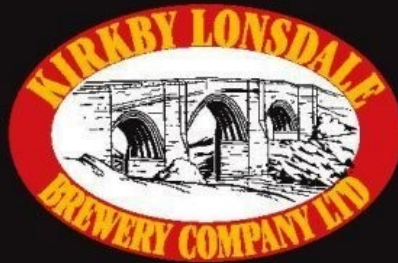


A range of traditional ales brewed  
in the very heart of the Lake District.

Tel: 015394 36575  
info@barn gatesbrewerytrade.co.uk  
www.barn gatesbrewerytrade.co.uk



*We put the 'Ale' in Lonsdale*

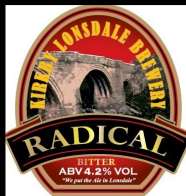


Order your Bottles, 10L & 20L  
Party boxes from here

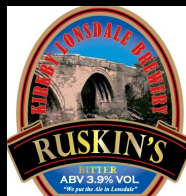
015242 72221 or mobile 07793149999  
Kirkby Lonsdale Brewery Co Ltd  
Unit 2F Old Station Yard, Kirkby Lonsdale  
Via Carnforth, Lancs LA6 2HP

[www.kirkbylonsdalebrewery.com](http://www.kirkbylonsdalebrewery.com)

Some of our Regular Beers



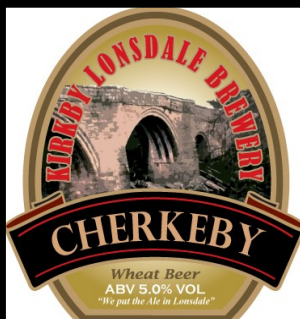
Radical 4.5%



Ruskin's Bitter 3.9%

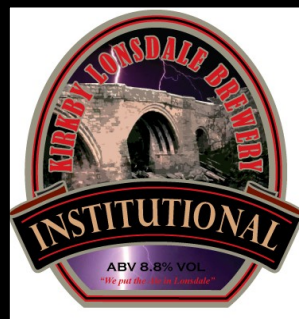


Monumental



Two great new Beers  
Cherkeby Wheat beer  
5.0%

Institutional  
Very Strong IPA  
8.0%



## EVENTS DIARY & BEER FESTIVALS

Contact Duncan Crabtree for more details, bookings etc. (01539)735739

### Monday 15th March Branch Meeting

Red lion Grasmere All welcome. Note this is 3rd Monday  
Kendal bus Station 7.15pm £3 Contact Duncan Crabtree to  
book seat

14 Mar, Prince of Wales (Foxfield), Punchbowl (The Green) and the  
Manor Arms (Broughton-in-Furness) combined festival  
(<http://www.princeofwalesfoxfield.co.uk/events.html>)

12-14 Mar, Angler's Arms, Haverthwaite  
(<http://www.discoverthelakes.co.uk/the-anglers-arms-beer-festival-copy-i1003.html>)

18-20 Mar, Pudsey Civic Hall, Pudsey, Leeds  
([www.leedsbeerfestival.co.uk](http://www.leedsbeerfestival.co.uk))

18-20 Mar, Arts Centre, Darlington ([www.darlocamra.org.uk](http://www.darlocamra.org.uk))

26-28 Mar, White Horse, Kings Meaburn, inside,

### Monday 12th April Branch Social TBA

14-17 Apr, Students Union, Newcastle Upon Tyne  
(<http://www.cannybevvy.co.uk/>)

16-18 Apr, CAMRA Members Weekend and AGM, Villa Marina, Douglas,  
Isle of Man (<http://www.camra.org.uk/page.aspx?o=306265>)

23rd April Additional Branch Social Joint social with Solway Branch to  
"The Fethers" Kirkoswald ring Duncan to book transport £3  
each. Travel via Appleby

22-24 Apr, Town Hall, Skipton ([www.keighleyandcravencamra.org.uk](http://www.keighleyandcravencamra.org.uk))

1st/2nd May Eagle & Child, Staveley beer festiv

10th May Branch meeting TBA

4-5 Jun, Keswick Beer Festival (<http://www.keswickbeerfestival.co.uk/>)

10-13 Jun, Boot Beer Festival, the pubs in Boot  
(<http://www.bootbeer.co.uk/>)

11-13 Jun, Brewers Weekend, Prince of Wales, Foxfield  
(<http://www.princeofwalesfoxfield.co.uk/events.html>)

14th June Branch Social TBA

25-27 Jun, Dentdale Music and Beer Festival  
(<http://www.dentmusicandbeer.com/>)

**Dave & Anita  
welcome you to**

# **THE RIFLEMAN'S ARMS**

**The village green pub  
at the top of the hill**



**CAMRA  
Pub of the Season  
Winter 2007/8**

- Opening Hours: 6pm - midnight Mon to Fri;  
12 noon - 12 midnight Sat & Sun
- Live folk music Thursday nights, with free refreshments
- Meeting room available
- Fairtrade Tea & Coffee
- Families, Walkers, & Dogs welcome
- Quiet Pub, no juke box
- Separate Poolroom

**Now a Member of SIBA beer list selling local  
Cumbrian Ales from 4 handpumps**

The Rifleman's Arms  
4-6 Greenside  
Kendal  
Cumbria  
LA9 4LD  
07722686249



## The Cross Keys Hotel

Superior En-suite accommodation

2 Four Posters, 2 Family Rooms 4 Double Rooms 2 Bedroom Cottage

Open all day, Beer Garden, Home cooked food, Function room

Large car park CAMRA GBG 2007 Robinsons Best Kept Cellar 2008 - 09

[www.thecrosskeyshotel.co.uk](http://www.thecrosskeyshotel.co.uk) Milnthorpe 62115

## DRIP TRAY NOTICE BOARD

The Globe closed.  
Black Swan about to change licensee.

The good news is we have two more Kendal pubs now selling LOCAL real ales. The Masons Arms in Stramongate has reopened after a complete refurbishment. Mangers Dave & Collette are now serving two Cumbrian ales plus good pub food. The Rifleman's is now in the care of Dave & Anita, who have moved from the George & Dragon, Lancaster, and they are now selling Cumbrian ales from the SIBA list.

The King's Arms at Kirkby Stephen is gaining a good reputation for its Real Ales. They have 3 hand pumps; one is a Dent beer and the others changing local ales. Geoff. the Landlord, is very pleased to welcome real drinkers like himself. Oh ! And by the way the food is great too!

Queens PDF done

## Brewery Updates



### Hawkshead Brewery

Nothing new to report this edition, for their next beer festival see the advert on Page 2

### Dent Brewery

Dent are to produce a new beer, a bitter at 4%, called 'Rescewe'. For every nine that a pub sells Dent Brewery will donate £5 to the Clapham Cave Rescue group who are celebrating their 75th Anniversary this year.

Other beers definitely in the pipeline will be a new 4.2% bitter, a new 4.6% stout and a strong barley ale at around 8/9% which will be put into 330ml bottles. All the Dent vans are shortly to be re-liveried. The Dent website has been completely re-launched at [www.dentbrewery.co.uk](http://www.dentbrewery.co.uk)

### Kirkby Lonsdale

The Brewery produced a well received seasonal ale at Christmas called 'Institutional' a very strong IPA style beer at 8.8% ABV. A couple of casks are left and should be available at their proposed beer festival over the May Bank holiday weekend and some 15 to 20 hand pumps will be set up. The brewery is to launch a new beer in early March. It is a wheat beer at 5.5% and called by the ancient name for Kirby which is 'Cherkeby.'

### Tirril

Despite severe ice damage just after Christmas, which put the brewery temporarily out of commission, repairs were made in time to prevent deliveries being affected. The brewery having had further threats from Thwaites about their 'Wainwright knew my Father' beer, to which Thwaites had objected as it infringed their Wainwright registered brand name, have now changed the beer name again to 'Nameless Ale'. This turned by accident to be a good choice as several people have pointed out that Wainwright's ashes were indeed scattered at his favourite place 'Innominate Tarn.'

### Watermill Brewing Co.

The main news this quarter is that Dog'th Vader 5.1% has been bottled to complement *Collie Wobbles*, *A Bit'er Ruff* and *Wruff Night* which have been available for a while.

### Winster Brewery

The newest Brewery in the Westmorland branch commenced operation recently at the Brown Horse, Winster. They are producing a bitter at 3.9% called 'Old School.' from a new 2.5 barrel brewing plant. We wish them every success and why not go and try a pint yourself? See article on page 39.



## OUTGATE INN

Outgate, Nr Hawkshead,  
[www.outgateinn.co.uk](http://www.outgateinn.co.uk)

- ♦ Tony & Sue Gray serve traditional cask ales from their Robinson's Best Kept Cellar 2009/10! Delicious home cooked meals
- ♦ Lunchtime special – soup & sandwich £5.95
- ♦ Comfortable en-suite accommodation

*The*  
**Orange Tree**  
 HOTEL and FREEHOUSE

*Eat:*  
 Fine home cooked food from local shops and suppliers here in town.

*Drink:*  
 A family-run hotel with our own fine cask ales from The Kirkby Lonsdale Brewery.

*We put the 'Ale' into Lonsdale!*

*Stay:*  
 Accommodation available.  
 8 Luxury rooms & 2 charming cottages.

*Just a picturesque walk through the churchyard then left at the church.*

[www.theorangetreehotel.co.uk](http://www.theorangetreehotel.co.uk) Tel: 015242 - 71716

PDF Flair Hair

CAMRA, has met the Treasury to discuss the forthcoming budget and CAMRA's budget submission. CAMRA recently sent a budget submission to the Chancellor, titled 'Protecting Real Ale and Real Pubs.' The budget submission voices concern over the unprecedented increase of beer duty (20%) in the past two years, and the current beer and pub industry crisis, which has lead to pubs closing at a rate of over 5 a day. CAMRA proposes an immediate freeze in beer duty and an abandonment of the beer duty escalator in the forthcoming budget.





Colette & Dave welcome you to the  
**Masons Arms**

22 Stramongate  
Kendal  
Cumbria  
LA9 4BN

Open all day

The Masons has been completely  
refurbished and for the first time in many years is now open for  
the sale of local Cumbrian **REAL ALES**

- Town Centre location
- Real Ales, (Hawkshead Bitter & Coniston Bluebird)
- Homemade bar food, using local fresh produce, available  
Tuesday to Saturday from Noon till 6pm
- Darts, Domino Teams welcome
- Meeting Room

**COME ON IN, YOU'LL BE SURPRISED AT THE DIFFERENCE!**

# STRINGERS

**100% Renewably Powered Brewery**  
**Ulverston Cumbria**

**A range of light and dark beers always available**



**01229 581387**

**sales@stringersbeer.co.uk**



For information or  
Bookings contact:  
Ed or Lee

Tel: (015394) 36372

[www.kingsarmshawkshead.co.uk](http://www.kingsarmshawkshead.co.uk)

### **HAWKSHEAD, AMBLESIDE, CUMBRIA**

This traditional Lakeland Inn with oak beams and open fire in the bar, offers a warm welcome to all. Light snacks and bar meals are served between 12-2.30 and 6-9.30 daily and are complimented by a choice of 4 cask ales. Situated in the delightful village of Hawkshead, the Kings Arms makes an ideal base to tour the surrounding National Park. Accommodation either Bed and Breakfast or in one of 3 Self Catering Cottages, available all year round.

☆☆☆ SPECIAL MID-WEEK BREAKS ☆☆☆

**Hawkshead Brewery Ales always on tap**  
**Coniston Brewery's Bluebird Bitter—CAMRA Champion Beer of Britain**  
regularly available here at the 'Kings'

Keswick PDF Adv, please insert pdf inside  
the coloured edging. Thnxs

## WESTMORLAND BREWRIES Winster Brewery

The Winster Brewery is the very latest micro brewery to commence brewing in Westmorland. The Brewery is based at the Brown Horse pub in Winster and is owned by Steven Edmondson who has been running the pub some four years now. He has established a great range of Cumbrian and north west beers and has three to four handpumps on at a time. Besides their own 'Old School' bitter at 3.9%, Pub Manager Craig tells me that they normally also have 'Pride of Pendle' and Coniston 'Bluebird' on as well and often one changing real ale. At the time we visited the Brewery the fourth ale was Lytham Gold.

Steven has established a Farm Shop behind the pub which sells his own



*The Brown Horse, Winster*

meat and vegetable produce and it seemed a natural step to start brewing his own beer as well. A brand new 2.5 barrel brewery installation was purchased from the Porter Brewing Company and installed alongside the pub. The brewer is Gerard Lyon and his 'Old School' was certainly a very good & clear bitter ale.

The demand for the beer has been very good and casks are soon to be distributed to outlets in Manchester.

The Brown Horse itself is now a great place for real ale and has a very cosy, comfortable bar linked to a good sized restaurant serving bar food & an 'a la carte' menu. The pub also has several rooms with en-suite accommodation, each offering vistas over the Winster valley.

We would thank Steve and staff for establishing yet another fine Cumbrian, indeed a Westmorland Brewery, it is certainly one to keep an eye on! DC.



# Royal Oak Inn

**Brantfell Road  
BOWNESS-ON-WINDERMERE**

**OPEN FROM 11, 7 DAYS A WEEK**

**FOUR REAL ALES, INCLUDING CONISTON BLUEBIRD**

**Children's licence, dining room  
Games area with pool, TV etc.  
Excellent home-cooked meals served all day  
Warm, welcoming atmosphere + real fire!**



**Patio, car park and en-suite accommodation**

**For full details and bookings**

**Telephone 015394 43970; e-mail [info@royaloak-windermere.co.uk](mailto:info@royaloak-windermere.co.uk)**

**Website [www.royaloakwindermere.co.uk](http://www.royaloakwindermere.co.uk)**

**Steve and Angie look forward to seeing you**



## Join CAMRA today!

Complete the Direct Debit mandate below; alternatively send a cheque payable to CAMRA Ltd with your completed form; visit [www.camra.org.uk](http://www.camra.org.uk) or call 01727 86701 All forms should be addressed to Membership Secretary, CAMRA 230, Hatfield road, St Albans AL1 4LW. Membership costs £20 single & £25 double (£22 single or £27 if not paying by D/D. Concessionary Rates are £14 under 26 and £14 over £60. Life Membership £594.

For joint membership (or £22 single and £27 joint if not paying by Direct Debit).

Title \_\_\_\_\_ Surname \_\_\_\_\_

Forename(s) \_\_\_\_\_ DOB \_\_\_\_\_

Partner (if joint membership) \_\_\_\_\_

Address \_\_\_\_\_

Postcode \_\_\_\_\_ Tel. no. \_\_\_\_\_

I wish to join the Campaign for Real Ale, and agree to abide by the Memorandum and articles of Association.

I enclose a cheque for \_\_\_\_\_

Signed \_\_\_\_\_

(Applications will be processed within 21 days)



### Instruction to your Bank or Building Society to pay by Direct Debit



Please fill in the form and send to: Campaign for Real Ale Ltd. 230 Hatfield Road, St. Albans, Herts AL1 4LW

Name and full postal address of your Bank or Building Society

Originators Identification Number

To the Manager Bank or Building Society

9 2 6 1 2 9

Address

#### FOR CAMRA OFFICIAL USE ONLY

This is not part of the instruction to your Bank or Building Society

Postcode

Membership Number

Name(s) of Account Holder (s)

Name

Postcode

Bank or Building Society Account Number

#### Instructions to your Bank or Building Society

Please pay CAMRA Direct Debits from the account detailed on this instruction subject to the safeguards assured by the Direct Debit Guarantee. I understand that this instruction may remain with CAMRA and, if so will be passed electronically to my Bank/Building Society.

Branch Sort Code

Signature(s)

Reference Number

Date

Banks and Building Societies may not accept Direct Debit Instructions for some types of account.

## Search for "The Rat Race"

Most people want to escape from the rat race; but what can you do when you've recently been informed that you're going to lose your job, you're a CAMRA member, you've helped out with the Ulverston Beer Festival, amongst others, and you've been to a variety of CAMRA presentations, including one on "Micro Pubs?" Well it's obvious - you open a Micro Pub.

All this has happened to Peter Morgan who has recently opened "The Rat Race Ale House" in a tiny room in Hartlepool Railway Station, which is on the Middlesbrough to Newcastle Northern Rail line. The room measures only 20ft by 14ft and has been converted from its previous role as a newsagent into an extremely compact Micro Pub. The "cellar" is found in a corner of the pub and Peter serves his beer from there as there is no room for a bar. The pub only sells real ale and cider along with a selection of wines and soft drinks. Peter specialises in real ales from the North East and Cumbria.

In spite of the fact that numerous

pubs are closing every week Peter hopes that his back to basics real ale micro pub will be a success. Customers are already enjoying both the real ale and being able to go somewhere where there isn't loud music, just real conversation.

However, make sure that the pub is going to be open before you visit, as opening hours are dependant on the train times.

If time permits, whilst in Hartlepool, don't forget to also try "The Causeway," which is a 15 minute walk from the station and also serves up to eight real ales which normally includes an excellent Banks Bitter as well as an equally good Cameron's Strongarm.

Peter and his pub have previously had coverage in the media in both local and national newspapers as well as appearing on regional television.

So if you're thinking about leaving the rat race, don't do it! Instead search out and visit "The Rat Race Ale House" on Hartlepool Station and enjoy a pint or two of good quality real ale along with some real conversation; and don't forget to try "The Causeway" as well.

David Prickett



*Our old Furness Friend Pete Morgan outside his pub*



## THE GEORGE & DRAGON DENT

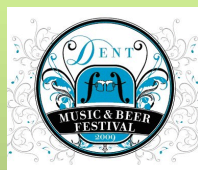


### DENT BREWERY TAP HOUSE

- Set in the heart of picturesque Dent village.
- Friendly & welcoming Inn
- With en-suite accommodation in all rooms
- Family rooms available
- Real log fires complement the locally sourced produce for our main meals and bar snacks alike
- Our own brewed real cask ales are a
- Walkers & Dogs welcome
- Hours 10.30am till late 7 days a week
- Lunch 12 - 2.30pm; Evening meals 6 - 8.30pm

Should you require more information or a tour  
of the famous Dent Brewery please contact us on  
015396 25256

Web site: [www.thegeorgeanddragondent.co.uk](http://www.thegeorgeanddragondent.co.uk)  
Email: [mail@thegeorgeanddragondent.co.uk](mailto:mail@thegeorgeanddragondent.co.uk)



**DENTDALE MUSIC & BEER FESTIVAL**  
**25TH-27TH JUNE 2010**  
[www.dentmusicandbeer.com](http://www.dentmusicandbeer.com)  
**FREE FREE FREE FREE FREE FREE**





**www.Lakelandpub.co.uk**  
**Tel 01539 821309**

**We are situated In the Village of Ings. Near Windermere LA8 9PY**

**Up to 16 real ales on at once**  
**Excellent choice of menu & specials**  
**Including beef from our own herd**  
**Served every day 12 - 9pm**

**Children & dogs welcome**  
**On site micro brewery**  
**8 en-suite bedrooms**

**We give you 100% Beer in our "over sized" glasses !**

**Food served everyday 12 noon - 9.00pm**

**We are proud to be named as CAMRA CUMBRIA PUB OF THE YEAR 2009**

**COLLIE WOBBLES**  
 A light golden Ale  
 ABV 3.7%  
 Brewed in the village of Ings, The Lake District

**W'RUFF NIGHT**  
 Pale, Smooth & Dry  
 ABV 5.0%  
 Brewed in the village of Ings, The Lake District

**A BIT'ER RUFF**  
 Classic Best Bitter  
 ABV 4.1%  
 Brewed in the village of Ings, The Lake District

**DOG'TH VADER**  
 Dark & Powerful  
 ABV 5.1%  
 Brewed in the village of Ings, The Lake District

Printed by Kent Valley Colour Printers-Kendal (01539) 741344